

# Splinters

May 2026

*The newsletter of Christchurch  
Woodturners Association Inc.*



*Christchurch Woodturners  
Association Inc.*

---

## In this month's Newsletter:

Upcoming Events  
London Plane available  
April Club Meeting Show Table  
Monthly Turning Tip  
Tulips for MS and Parkinsons  
Club Demo - Power Carving  
Looking for ideas...  
Club contacts

---

## Upcoming Events Calendar

### Christchurch Club Sessions

**Thursdays** Afternoon (1-4pm) or evening (7-9pm) turning at the clubrooms

### Club Meeting demonstrators

**Wed 27 May** Mike Ginty - puzzle ball

**Wed 24 June** Noel Graham - objects to turn for kids corner decorating

**Wed 22 July** Peter Clemett - mystery

### Regional Events - More to come as the year progresses

**30 Oct-1 Nov 2026** Spin Around Waitaki - watch this space

---

## London Plane available for collection

Evan has some (wet) London Plane in various lengths (500-900mm) available for collection.  
If you are interested contact Evan 021 033 8065.

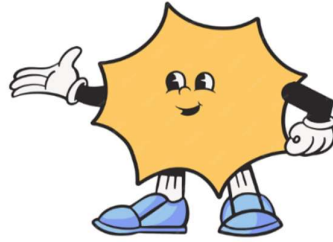


---

## March Club Meeting – Show table...

### Peoples Choice this month...

- 1st **Mike G** – Spiky Ball
- 2nd **Darius** – Lidded hollow bowl
- 3rd **Ben** - Ball



---

## Monthly Turning Tip....

I (Mike G) recently wanted to mark out positions on a sphere and found that a typical pencil compass would open up after a while. Like most woodturners I have a set of dividers that keeps it's set dimensions. I drilled two holes in the wood and pushed one leg of the dividers in one hole and a pencil in the other hole. I can use the dividers with or without the pencil.

Problem solved at no cost.

Many thanks Mike G.



## If you have a handy idea or tip

you would like to share with your fellow turners - please email it (and a picture if you have one) into [newsletter@woodturning.nz](mailto:newsletter@woodturning.nz)

---

## Tulips for MS and Parkinson's Disease... can you help?

*The tulip became the emblem of Parkinson's disease in 2005 at the World Parkinson's Disease Day Conference, chosen for its symbolism of hope and love. This followed a tradition started by J.W.S. Van der Wereld, a Dutch horticulturist with Parkinson's, who in 1980 bred a red and white tulip to represent his fight against the disease. The tulip's enduring symbol serves as a global beacon of solidarity and a hopeful reminder in the quest for a cure. With this spirit in mind, we named our project as **'TULIP' (Three-dimensional (3D) Understanding and Learning of Impairments in Parkinson's Disease)** to foster transformative new machine learning approaches for understanding and treating Parkinson's Disease.*

In 2025, the Ashburton Woodturners proudly supported the NAW's Parkinson's Tulip Project by generously donating their time and craftsmanship to create around 200 wooden tulips.

These wooden red tulips were used by MS & Parkinson's Canterbury as part of their fundraising efforts for Parkinson's research, selling for \$5 each and also being presented as gifts to guest speakers at the Braintree Wellness Centre.

With the original supply of donated tulips now exhausted, **MS & Parkinson's Canterbury have approached the CWA to see if members would be willing to help continue this worthwhile initiative.** Red tulips will support Parkinson's fundraising, while orange tulips will be used to support Multiple Sclerosis fundraising efforts.

The tulip turning instructions are now on the CWA website under the projects page - here is the link: <https://www.woodturning.nz/projects/>

Any tulips made will be greatly appreciated. Stem tags identifying them as handcrafted by CWA are available, providing a wonderful opportunity to promote the club and its community involvement.

Some club members have asked whether the tulips could be painted by others if they were to complete only the turning. If so, Liz McIntosh can arrange for the tulips to be painted, mounted onto stems, and delivered to Braintree. Contact Liz by email: [macpacmum@gmail.com](mailto:macpacmum@gmail.com) or mobile: 021 101 0243.

---

## Suggestions Welcome

We're always on the lookout for fresh ideas for demonstrations and workshops, as well as recommendations for particular demonstrators or tutors. If you have a suggestion, we'd love to hear from you—please email one of the Committee members listed below.



---

## Looking for a project idea...

Check out the projects directory on the South Auckland Woodturners website - they have pages of links to project instructions [South Auckland Woodturners Guild - projects](#)



Whether you are an experienced turner or a beginner, the project pages will provide you with some helpful project instruction sheets and ideas of things to make.

---

## April Monthly Meeting Demo

### Andrew Biggs - Power Carving

The tools Andrew used were:  
micro motor power carver  
Kutzall and Sabertooth burs

Andrew highlighted some key considerations for power carving. These included:

1. Think about your bowl shape and thickness in relation to the design you want to carve onto it
2. Two key safety issues:
  - a. Wear a dust mask – you'll be amazed how much dust this produces
  - b. Keep your fingers away from the burs (use your other hand to help guide and steady the tool hand)
3. Layout and design
4. Artistic verse realistic (or both) application
5. Drawing freehand or printing your design
6. Use pencil to outline your design and then when you are happy do it with felt pen
7. Always pull towards you (don't push the bur away)
8. Cut to the outside of the line in your design as the width of the bur will reduce the size of your design
9. Patience is critical
10. Use 2 hands (tool hand and the other to support / guide)
11. Everything is about light and shadow – working in sunlight gives the best light and shadow
12. Use your bur – pulling with the grain of the timber
13. As you work if you see something that does not look right – fix it immediately as the chances of finding it again are pretty slim!

#### The key steps:

Watch the video to get in-depth information.

- a. Draw your design on paper, cut it out and then use this to outline your design on the timber – drawing in pencil until you are happy with it, then use felt pen to mark in your lines
- b. Carve out your background line (5-6mm deep)
- c. Remove the background
- d. Define your design e.g. leaves
- e. Shape your leaves (giving them character) – artistic vs realistic
- f. Add in your shadowing
- g. Finish your background – stipple or burn etc
- h. Sand and add in your leaf veins
- i. Finish with stain or paint – think about your colours so you don't lose your shadowing.

Click on the link below to watch the video of the demonstration.

<https://drive.google.com/drive/folders/1yp7mb-mfjQe2RwZekJXMUmtLSTfN7HRm>

Many thanks Andrew



---

## Join Us at Club Night

Come along to our club nights and enjoy the company of fellow woodturning enthusiasts. There's always something to look forward to:

- Tea and coffee, with a biscuit (or two)
- Friendly faces and great conversation
- Show table pieces to admire and vote on
- A library of books to borrow (just remember to return them!)
- And, of course, a raffle

We meet on the fourth Wednesday of each month at 7.00pm in the Harvard Lounge, Wigram.

---

## Christchurch Woodturners Association Contact Details

Patron: Soren Berger  
Life Member: Noel Graham

### Committee

Chairman:	Nigel Elson	021 186 2768	<a href="mailto:Chairman@woodturning.nz">Chairman@ woodturning.nz</a>
Vice Chairman:	Dee Morgan	022 354 1671	<a href="mailto:vice-chairman@ woodturning.nz">vice-chairman@ woodturning.nz</a>
Treasurer:	Bill Parsons	03 351 5647	<a href="mailto:treasurer@woodturning.nz">treasurer@woodturning.nz</a>
	Chris Graham	022 416 8938	<a href="mailto:treasurer@woodturning.nz">treasurer@woodturning.nz</a>
Secretary:	Evan Gow	021 033 8065	<a href="mailto:secretary @ woodturning.nz">secretary @ woodturning.nz</a>
Membership:	Peter Clemett	03 342 242	<a href="mailto:membership@woodturning.nz">membership@woodturning.nz</a>
Newsletter:	Tina von Pein	027 201 1000	<a href="mailto:newsletter@ woodturning.nz">newsletter@ woodturning.nz</a>
Webmaster:	Paul Blackburn	022 600 3162	<a href="mailto:webmaster @ woodturning.nz">webmaster @ woodturning.nz</a>
NAW Course:	Noel Graham	027 240 8112	<a href="mailto:tutor@ woodturning.nz">tutor@ woodturning.nz</a>
Members:	Mike Ginty	022 164 3322	
	Andrew Biggs	021 342 438	
	Abraham Faid	022 038 9919	
	David Feind	027 545 5787	

**Please note the change in the Committee email addresses and update your email contacts**

### Club Information

Club Membership Details and registration, visit <https://www.woodturning.nz/membership/>  
Woodturning Course For information, visit <https://www.woodturning.nz/courses/>  
Past Newsletters Can be downloaded from <https://www.woodturning.nz/newsletters/>

### Regular Meeting Schedule

Club Meetings 4th Wednesday of the month. 7pm at the Harvard Community Lounge  
Open Workshop Thursdays 1-4pm, 7-9pm at the Workshop, Auburn Reserve  
Miniature Turning 1st Wednesday of the month. 7pm at the Workshop, Auburn Reserve  
  
Embellishment \* 2nd Wednesday of the month. 7pm at the Workshop, Auburn Reserve  
**Bring along your embellishment project and tools, share your ideas, skills and questions.**

---

***Our Club is affiliated to the National Association of Woodworkers NZ Inc.(NAW).***

The National Certificate of Woodturning course is administered by NAW. Visit <https://naw.org.nz/> for more information



*Copyright (C) 2026 Christchurch Woodturners Assoc. All rights reserved.*

You are receiving this email because you opted in via our website.

Our mailing address is:

Christchurch Woodturners Assoc 18 Creese Place Redwood Christchurch, Canterbury 8051

New Zealand