

Splinters

April 2026

*The newsletter of Christchurch
Woodturners Association Inc.*



In this month's Newsletter:

Upcoming Events
Christchurch Woodturners 30th Anniversary
Central Districts Woodworker's Expo
Renewal of Membership
March Club Meeting Show Table
NAW National Wood Expo 2026
Club Demo - Turning an Easter Bunny
Club contacts

Upcoming Events Calendar

Christchurch Club Sessions

Thursdays Afternoon (1-4pm) or evening (7-9pm) turning at the clubrooms

Wed 22 April Andrew Biggs - power carving

Wed 22 May Mike Ginty - Mystery Topic

Regional Events - More to come as the year progresses

2-3 May 2026 NAW National Expo - Papatoetoe, Auckland (see advert in the newsletter)

17 May 2026 Central Districts Woodworker's Expo - Palmerston North (see advert below)

26 Sept 2026 Christchurch Woodturners Assoc - 30th Anniversary celebration (see advert below)

30th Anniversary - save this date... Sat 26 September

🌟 Save the Date – A Milestone Worth Turning Up For! 🌟

Mark your calendars for **26 September 2026** and get ready to celebrate something truly special...

🎉 the **30th Anniversary of the Christchurch Woodturners Assoc (1996–2026)** 🎉

Three decades of shavings, skill, stories, and camaraderie deserve more than just a nod... they deserve a proper celebration.

Expect a day packed with:

- 🔧 Inspiring demonstrations
- 🖼️ Beautiful work on display
- 👥 Great company and shared passion
- 🎁 A few surprises along the way

Whether you're a seasoned turner, just curious about the craft, young or more experienced,

there'll be something to spark your interest.

More details coming soon—stay tuned!



Golden Chisel Competition

in conjunction with the
Central Districts Woodworking Expo

Sunday May 17, 2026

9am - 3pm

Arena Barber Hall
Waldegrave Street
Palmerston North



All woodturners welcome
\$10 registration per woodturner

The Golden Chisel event is sponsored by Carbatec and prizes will be given to 1st, 2nd and 3rd placings

Hosted by **Peter Wolfkamp**, resident builder.

1st place: National trophy, plus Robery Sawby chisel, cash and Carbatec vouchers (to value of \$1000)

2nd: cash and Carbatec vouchers to value of \$500

3rd: cash and Carbatec vouchers to value of \$200



Enter by emailing goldenchisel@manawatuwoodworkers.org.nz

Renewal of membership

Christchurch Woodturners' Association

Final reminder that your Club membership is due before the end of March. But **its not too late to pay your \$50 annual subscription**. Contact membership@woodturning.nz for our bank account details. The membership period runs from 1 April to 31 March each year.

Christchurch Woodturners' Association has a great year planned for you. Remember, the workshop is open every Thursday 12.00 – 4.00pm and 7.00 – 9.00pm. There are classes on the first three Saturdays, and on Wednesdays we have Small Turning, Embellishments, and Club Nights. Check the e-newsletter for details.

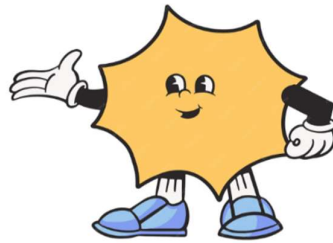
If you have changed any of your contact details, please contact Peter at membership@woodturning.nz.

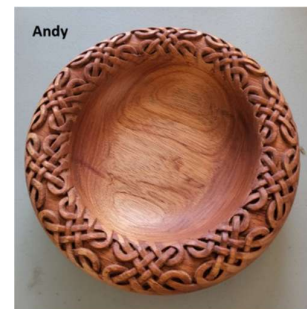
If you have any questions or want to offer wood, tools, services, etc., then please email Evan at secretary@woodturning.nz.

March Club Meeting – Show table...

Peoples Choice this month...

- 1st **Mike G** - Beehive
- 2nd **Kyle** - Embellished bowl
- 3rd **Ben** - Hollow bowl





Join Us at Club Night

Come along to our club nights and enjoy the company of fellow woodturning enthusiasts. There's always something to look forward to:

- Tea and coffee, with a biscuit (or two)
- Friendly faces and great conversation
- Show table pieces to admire and vote on
- A library of books to borrow (just remember to return them!)
- And, of course, a raffle

We meet on the fourth Wednesday of each month at 7.00pm in the Harvard Lounge, Wigram.

NATIONAL WOOD EXPO



Papatoetoe Cosmopolitan Club
53 Rangitoto Road, Papatoetoe
Saturday 02 May 8.45am - 5.00pm
6.15pm - Gala Dinner

Sunday 03 May 9.00am - 2.45pm



Andi Wolfe
USA (2 Demos)

Live Woodturning Demonstrations:
including: morning tea and lunch
both days and afternoon tea (Sat only)

Weekend: Just \$120 with Early Bird
Special (01-31 March) for NAW
Members



Emiliano Achaval
Hawaii (2 Demos)

Gala Dinner just \$50

Non NAW Members very welcome -
extra \$50

FREE ENTRY to extensive trade hall
featuring: Carbatec, Timberly,
Treeworkx Sandpapers & Woodgrain NZ



Troy Grimwood



Robbie Graham

PLUS SOMETHING NEW - We are
offering workshops on Monday 4th
and Tuesday 5th and if you come to
the whole weekend you can apply
for a space in either Emiliano or
Andi's workshop its just \$135



Rene Baxalle



**REGISTRATIONS OPEN 01 MARCH
FOR YOUR EARLY BIRD SPECIAL**

Visit naw.org.nz and register online

Proudly
sponsored by



Suggestions Welcome

We're always on the lookout for fresh ideas for demonstrations and workshops, as well as recommendations for particular demonstrators or tutors. If you have a suggestion, we'd love to hear from you—please email one of the Committee members listed below.



March Monthly Meeting Demo

Noel Graham – An Easter Bunny

Our March club demonstrator was Noel Graham who was asked to demo something with an Easter focus. He noted that after teaching at the course last Saturday where eggs were the focus of the day, he'd had enough of eggs, so they were off the menu! Tonight's demonstration was making a rabbit that was really simple and at home he could include his young grandchildren to make quickly and easily with him.

Here are the key steps:

Making the body

1. Round out your blank timber for the body
2. Drill the holes for the ears
3. Shape the head
4. Shape shoulders and the body
5. Sand
6. Remove head centre point timber
7. Part off the base

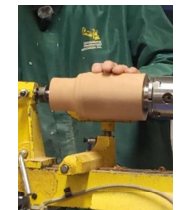
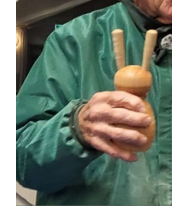
Making the ears (one ear at a time)

1. Round your timber
2. Square end into chuck
3. Bring base of ear down to an 8mm spigot (to fit into the ear holes drilled on the body - check that it fits!)
4. Shape the rest of the ear
5. Sand and part off
6. Repeat the process to make the second ear
7. Fit your ears

Finishing

1. Make a wooden cotton tail (round ball)
2. Draw in the mouth, eyes, nose
3. Finish with oil or your favourite finish

Many thanks Noel.



Click on the link below to watch the video of the demonstration.

https://drive.google.com/file/d/1g2zdzVlXbr4zZrCoH0QTsDb0azXkUHP/_view?usp=drive_link

Christchurch Woodturners Association Contact Details

Patron: Soren Berger
Life Member: Noel Graham

Committee

Chairman:	Nigel Elson	021 186 2768	Chairman@ woodturning.nz
Vice Chairman:	Dee Morgan	022 354 1671	vice-chairman@ woodturning.nz
Treasurer:	Bill Parsons	03 351 5647	treasurer@woodturning.nz
	Chris Graham	022 416 8938	treasurer@woodturning.nz
Secretary:	Evan Gow	021 033 8065	secretary @ woodturning.nz
Membership:	Peter Clemett	03 342 242	membership@woodturning.nz
Newsletter:	Tina von Pein	027 201 1000	newsletter@ woodturning.nz
Webmaster:	Paul Blackburn	022 600 3162	webmaster @ woodturning.nz
NAW Course:	Noel Graham	027 240 8112	tutor@ woodturning.nz
Members:	Mike Ginty	022 164 3322	
	Andrew Biggs	021 342 438	
	Abraham Faid	022 038 9919	
	David Feind	027 545 5787	

Please note the change in the Committee email addresses and update your email contacts

Club Information

Club Membership Details and registration, visit <https://www.woodturning.nz/membership/>
Woodturning Course For information, visit <https://www.woodturning.nz/courses/>
Past Newsletters Can be downloaded from <https://www.woodturning.nz/newsletters/>

Regular Meeting Schedule

Club Meetings 4th Wednesday of the month. 7pm at the Harvard Community Lounge
Open Workshop Thursdays 1-4pm, 7-9pm at the Workshop, Auburn Reserve
Miniature Turning 1st Wednesday of the month. 7pm at the Workshop, Auburn Reserve

Embellishment * 2nd Wednesday of the month. 7pm at the Workshop, Auburn Reserve
Bring along your embellishment project and tools, share your ideas, skills and questions.

Our Club is affiliated to the National Association of Woodworkers NZ Inc.(NAW).

The National Certificate of Woodturning course is administered by NAW. Visit <https://naw.org.nz/> for more information



Copyright (C) 2026 Christchurch Woodturners Assoc. All rights reserved.

You are receiving this email because you opted in via our website.

Our mailing address is:

Christchurch Woodturners Assoc 18 Creese Place Redwood Christchurch, Canterbury 8051

New Zealand