

Splinters July 2025

The newsletter of Christchurch Woodturners Association Inc.



In this months Newsletter:

[Club AGM](#)

[Club Caps](#)

[Club fund raiser - wood still available](#)

[Upcoming Events](#)

[The Art of Wood 2025](#)

[June Club Meeting Show Table](#)

[Monthly meeting demo writeup - Barley Twists / Spirals](#)

[Club Member Profile - Noel Graham](#)

[A few woodturning links you might explore](#)

[Club contacts](#)

[Wig Stand Session Flyer](#)

[Collaboration Weekend 2026](#)

**BREAKING NEWS:
TODAY I USED A
PIECE OF WOOD
THAT I'VE KEPT IN
MY GARAGE SINCE
2006 JUST IN CASE I
MIGHT NEED IT**

Club AGM

The next Club meeting on **Wednesday 23rd July** (7pm, Harvard Lounge, 31 Corsair Dr, Wigram, Christchurch) will be our AGM. Notification will be emailed out to all members and nominations for the Club committee positions are most welcome. The AGM will be held alongside the usual monthly meeting activities and a turning demonstration. Someone mentioned there might be more than biscuits with the cuppa!

Support your club - come along and join us and don't forget to bring one of your fabulous creations for the show table.

Club Caps

Show your support for your club, both financially and to the general public. Purchase one of these caps and wear it when you are woodturning to keep the shavings out of your hair. If you don't have hair, you can wear it outside to keep the sun off. Wear it when you meet other woodturners from other clubs. Be proud to say that you belong to the Christchurch Woodturners Association.

Contact Nigel if you want to purchase (\$15) a cap. President.chchwoodturning@gmail.com

Thanks Sam for modelling the cap.



For Sale Club Fundraiser - still some timber left

Olive root balls, Cherry Laurel (wet and needs cutting in half) and Oak timber for woodturning.

These are for sale - \$25 of a olive root, or @10 for cherry laurel and oak.

First in first served... contact Nigel E on 021 186 2768.



Upcoming Events Calendar

Christchurch Club Sessions

Thursdays Afternoon (1-4pm) or evening (7-9pm) turning at the clubrooms

Wed 23 July Club AGM, Cake and Demonstrator: Kyle Burns - embellishment

Wed 6 Aug Miniature turning workshop session

Wed 27 Aug Club night demonstrator: Andrew Biggs - wig stands

Sat 30 Aug Workshop session with Andrew Biggs - making wig stands (See flyer at the end of the newsletter)

2026 Collaboration Workshop (**30 Jan - 1 Feb**) put this weekend in your diary

Regional Events

22-23 Aug **Camp Run Amok** Southland Woodworkers Guild (Invercargill)

20 Sept **South Island Fun Day** (Ashburton)

31Oct-2 Nov **Spin Around Waitaki** (Oamaru)

A 3 day woodturning event featuring demonstrations by guest demonstrator

Paul Barton. Each demonstration is followed by time in the workshop so that those attending can have a go at the projects demonstrated. To see examples of his work,

visit Paul's Instagram page: [@paulbarton_woodartist](https://www.instagram.com/paulbarton_woodartist)



The Art of Wood Exhibition 2025

A National Association of Woodworkers Inc Event

[Placeholder for The Art of Wood 2025](https://exhibition.naw.org.nz)

Please visit <https://exhibition.naw.org.nz>

An Event of The National Association of Woodworkers NZ Inc.

“Promoting, fostering and encouraging art and craft in wood”

The National Association of Woodworkers NZ Incorporated brings together both amateur and professional people from all over New Zealand who are skilled in working with wood.

2025 Competition will open for entries in August 2025

June Club Meeting - Show table...

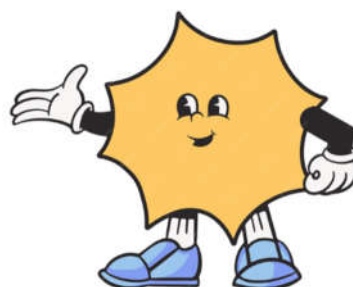
Peoples Choice this month...

1st Kapila - Bowl with lid

2nd Mike G - Emerging Bowls

3rd = Stephen H - Decorated Bowl and

Pohutukawa Rescue





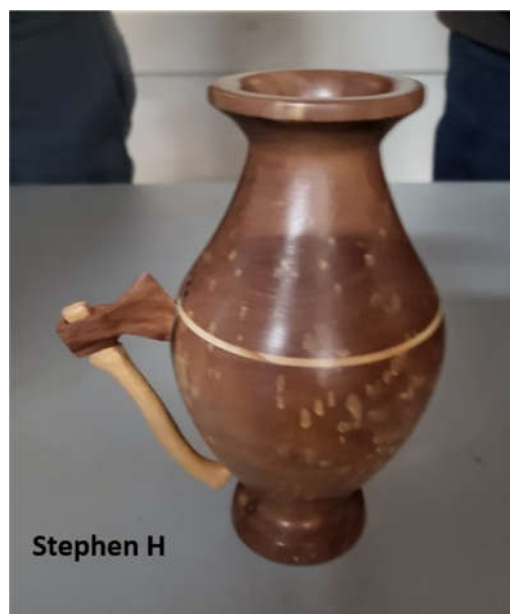
Kapila



Mike G



Stephen H



Stephen H



Dee



Abraham

Patrick



Dee



Patrick



Ben



Abraham



Dee





June Monthly Meeting Demo

Mike Ginty - Spirals and Barley Twists

As the session was advertised as spirals and barley twists and the latter having nothing to do with a piece of wood, Mike began his demo session with a history lesson going back 400 years in a small Abby or Convent in France some Nuns were experimenting with making medicine. They boiled barley in water, added sugar and boiled it to the optimum 'crack' temperature it would make hard toffee... and thus barley twist sweets were created. And as a treat Mike handed round some tasters (literally) of modern day barley twists both homemade (by Mike and his Grandchildren) and commercial!

Spirals have been around in architecture, jewellery etc for over 4000 years. During the Jacobean period (during the 1700's) furniture making was becoming very ornate and spirals were picked up in furniture design and creation. People would ask for twists in furniture by describing it as 'like the barley twists' and thus barley twists in furniture came to be.

If you want to find out more – follow this link [barleytwist turned timber](#)

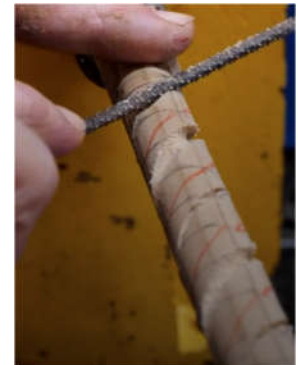
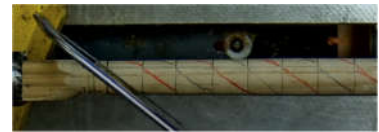
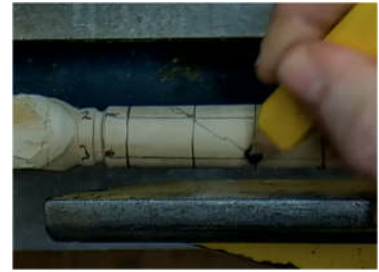
Mike has been creating twists (single and multiple) for many years.

When first seeing the turned twist he thought it was really hard to do, but once someone has demonstrated how to do it, it's very simple.

Some key pointers from Mike:



- Basically twists are created using a straight saw and turning the piece of timber as you saw to create the spiral effect.
- You start with a piece of timber roughed down to a cylinder in the spindle lathe position.
- You can even use an offcut of decking –depends how deep you want the twist.
- Peaks haven't been cut, but the troughs have been taken away.
- You can freehand your spiral or mark it up. Challenge arises when you want to make 2 identical ones! But if you mark it out as Mike suggested, you will be more likely to get consistency.
- Marking up your wood is a key initial step.
- Start with drawing a horizontal line from each of the corners to there corresponding corner at the other end as reference points to give consistency when making the cut. Can use your tool rest to help mark out the parallel line
- Number these reference lines to assist.
- Marking the starting point with a pencil round the timber.
- Then measure the diameter of your timber and mark multiple lines around the timber using the diameter measurement as your distance between the lines.
- The next step is start with reference line1 and join corner to corner diagonally along the length of the timber but ensuring you move across diagonally to the next square each time (so it snakes the length of your timber)
- Repeat with reference point 3.
- Then taking a red pencil repeat with reference points 2 and 4 (these are your peaks).
- The black lines are the peeks and the redline the trough.
- And then you start sawing – using a fretsaw, hacksaw, draw saw, tenon saw (for larger diameter). Cut starting on reference line 1 and saw the diagonal - this sets your direction guide.
- The saw goes at an angle to the timber and follows the line as you twist the timber.
- Keep cutting until the cut to a few millimetres in depth.
- Repeat for the other black reference line.
- The next step is the filing. Start with something like a chainsaw round file and file along the first reference saw line groove. Once your groove is set, you can use a course rasp to



take a little more timber off at once (on this example go in about 6mm).

- Continue this with increasingly wider rasps, deepening and widening the initial saw line – but don't go over your red lines(peaks). If you find yourself favouring one side, then turn the timber end-on-end so you are pushing against the other edge.
- Using a half round rasp means you can then widen the troughs, rather than continuing to make them deeper, getting as close to the red line as you can without going over it.
- If you use the large rasp at 90 degrees to the timber, it will start curving over the edge to the red line (less sanding required!).
- A large round file (intended for metal)will also help tidy up the spiral before you start sanding. You can also use a piece of wood and sandpaper very effectively.
- A long piece of cloth backed sandpaper can be used to sand and finish going right through the grits.
- If you decide to spin sand then you need to have the speed on the lathe very slow!



The link to this video is: [Club Demos](#)

Great demo, and as you said it looks hard, but isn't really!

Many thanks Mike



Suggestions Welcome

We are always keen to receive ideas for demonstrations or workshops and requests for specific demonstrators/tutors. Please email one of the Committee members above with your suggestion.



This months' Club Member Profile...

Noel Graham

I have always been interested in “things Wood”. Making the occasional child's toy was where it started. I became interested in woodturning during the early '90's. I purchased a Nova 3000 as my first lathe along with a few tools, quickly adding the necessary bandsaw. I was largely self taught in these early days. It is still a wonder to me how I got through this period with all fingers intact and an unscared face!

Finding the Christchurch Woodturners Assn was the start of my true education. I also attended classes (both woodturning and furniture making) at the Christchurch Polytechnic. I had only been in the Club for about two months when Celia Irvine started making noises for me to take on the role of President at the next AGM.

I started woodturning as a hobby. It quickly took over and I started working full time as a business selling at markets, through tourist shops and for furniture makers. Life was great – it was like never going to work.

I believe that the main objective of any club is the educate its members. Late in 2004 I was part of a group that started discussions with Aoraki Polytechnic on starting a Certificate in Woodturning. I started writing this during the middle of 2005. With the help from Jim Lowe the courses were finally completed. Along with Bruce Irvine and Rex Marshall we started teaching these courses in the woodwork room at Cobham Intermediate in early 2006.

Over the years I have purchased a few lathes. Luckily, my uneducated brain, stumbled on a good lathe to start – a Nova 3000. This was later upgraded to a DVR XP. I now have six lathes in the stable. My favourite is the Dixen Bowl Lathe. I have added many turning tools to the collection. This has made it easy to let club members try a tool before they purchase.

I also have a collection of chainsaws. Collecting wood is an ongoing and enjoyable process. I must be thinking of what may be needed in two years. I have a very understanding wife who has allowed my ever growing collection to clutter the section.

The opportunity to move into our own workshop has been one of the best things that has happened for our club. The opportunity to expand the education offered to members has been a great success. Being part of this is hugely important to me. This is my happy place.

PS. The internet provided the historical photos!



Come along to our club nights and enjoy the company of like-minded people. There is always:

- *tea and coffee with a biscuit (or two)*
- *a friendly person to chat with*
- *show table pieces to look at and vote on*
- *books to borrow from our library (remember to return them when you are finished), and*
- *a raffle.*

We meet on the fourth Wednesday evening at the Harvard Lounge in Wigram at 7.00pm.

A few links you may be interested in checking out...

Greg Morris - a Christchurch Turner

<https://www.gregmorriswoodturning.co.nz/>

Tomislav Tomasic Woodturning - making a whistle

<https://www.youtube.com/watch?v=M2ZlUnixNY>

Christchurch Woodturners Association Contact Details

Patron: Soren Berger

Life Member: Noel Graham

Committee

President:	Nigel Elson	021 186 2768	president.chchwoodturners@gmail.com
Vice President:	Dee Morgan	03 359 4386	vp.chchwoodturners@gmail.com
Treasurer:	Bill Parsons	03 351 5647	treasurer.chchwoodturners@gmail.com
Secretary:	Evan Gow	021 033 8065	secretary.chchwoodturners@gmail.com
Membership:	Peter Clemett	03 342 5242	membership.chchwoodturners@gmail.com
Newsletter:	Tina von Pein	027 201 1000	news.chchwoodturners@gmail.com
Webmaster:	Paul Blackburn	022 600 3162	webmaster.chchwoodturners@gmail.com
NAW Course:	Noel Graham	027 240 8112	noelgraham5@gmail.com
Members:	Keith McFadden	03 352 0333	
	Joe Hayes	03 385 3910	
	Mike Ginty	022 164 3322	
	Abraham Faid	022 038 9919	

Club Information

Club Membership	Details and registration, visit https://www.woodturning.nz/membership/
Woodturning Course	For information, visit https://www.woodturning.nz/courses/
Past Newsletters	Can be downloaded from https://www.woodturning.nz/newsletters/

Regular Meeting Schedule

Club Meetings	4th Wednesday of the month. 7pm at the Harvard Community Lounge
Open Workshop	Thursdays 1-4pm, 7-9pm at the Workshop, Auburn Reserve
Miniature Turning	1st Wednesday of the month. 7pm at the Workshop, Auburn Reserve
Embellishment *	2nd Wednesday of the month. 7pm at the Workshop, Auburn Reserve
* ON HOLD unless confirmed by separate email	

Making a wig stand



Plans will be supplied for those that need them or bring your own design

Your design can be formal, fun, crazy, plain, colourful, textured or natural

Sausage sizzle on the Saturday

Wood supplied or bring your own

Saturday 30th August
9am to 4pm

This is designed to be a fun day turning wig stands if there is enough interest then we will continue into the Sunday
Entry is free. Bring your own finishes, paint, stain, varnish, glue, etc or whatever else you need to finish them

But there is a catch (Ouch!!)
All wig stands must be donated to a charity nominated by the club committee.

Contact Andrew Biggs by email biggschristchurch@xtra.co.nz to book your place.

SAVE THE DATE

Collaboration weekend 2026

At the Workshop, 30/Jan-1/Feb 2026



Block out your diary for this special hands-on event

This will be a fun weekend of craft, teamwork, and learning at our workshop in Auburn Reserve. You will collaborate as a member of a small team to design and create an art piece based on your own ideas and inspired by the theme and guidelines that will be shared on the Friday evening.

You don't have to be an experienced turner or even a woodworker to take part. This is an occasion to bring all of your hobby and craft skills together, as a diversity of ideas, perspectives, materials, and techniques will produce the most interesting results.

Email Peter at membership.chchwoodturners@gmail.com to express interest and be put on the mailing list for information updates.

Registration Details will be notified later in the year



Our Club is affiliated to the National Association of Woodworkers NZ Inc.(NAW).

The National Certificate of Woodturning course is administered by NAW. Visit <https://naw.org.nz/> for more information

