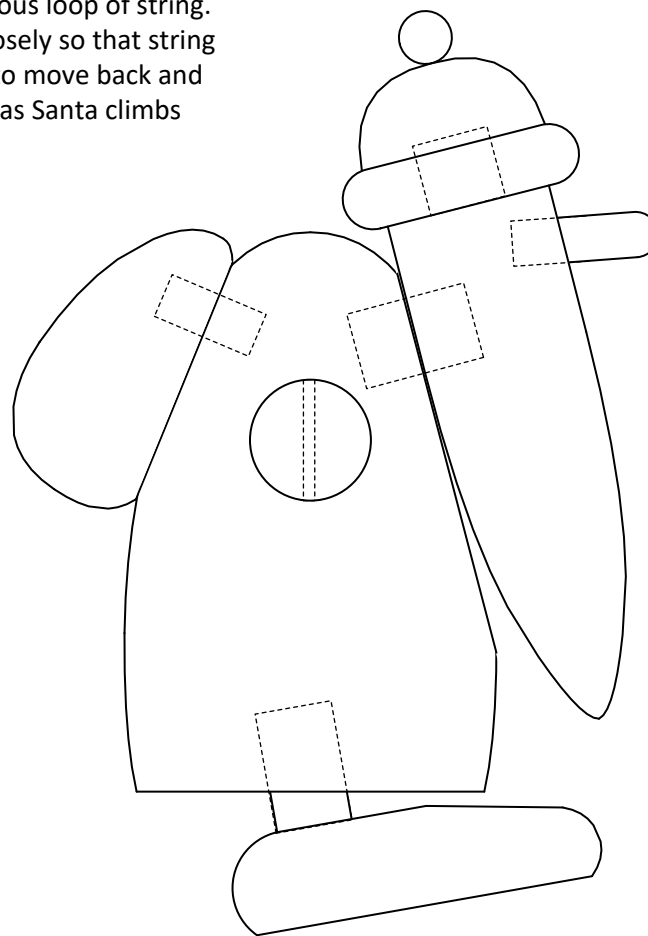


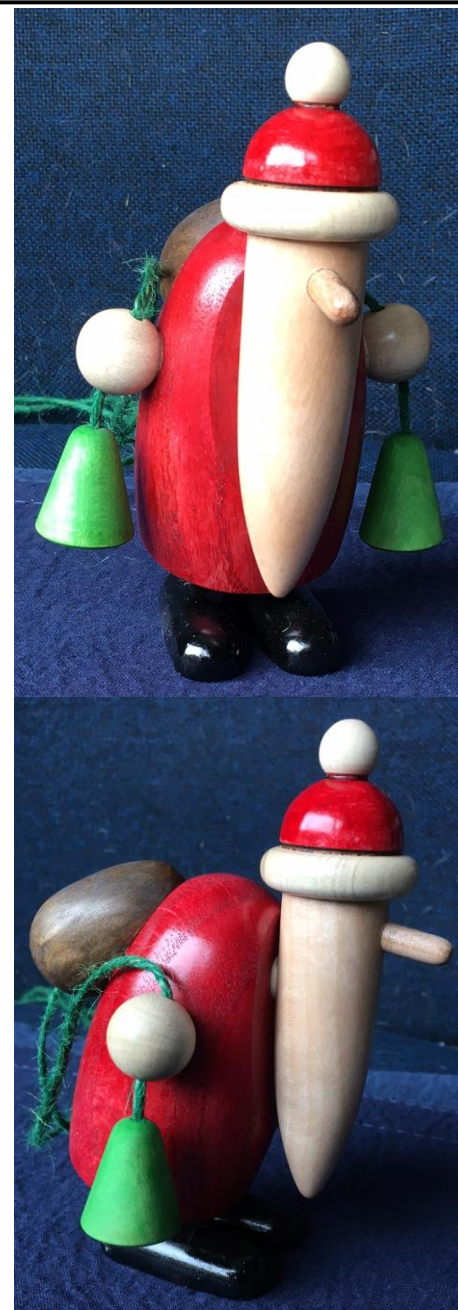
Continuous loop of string.
Hung loosely so that string
is free to move back and
forth as Santa climbs



To Make Santa Climb: Hang from string and pull down alternately on each knob.

For Best Results:

1. Hands must be above the centre of mass, so that santa balances feet-down
2. String holes through hands must be angled as shown. About 15 degrees from vertical works well.
3. String holes through hands should be sized for your string. 2.5mm is a good starting point



TITLE:

CLIMBING FIGURE - SANTA

REV:

01

REV:

01

DRN:

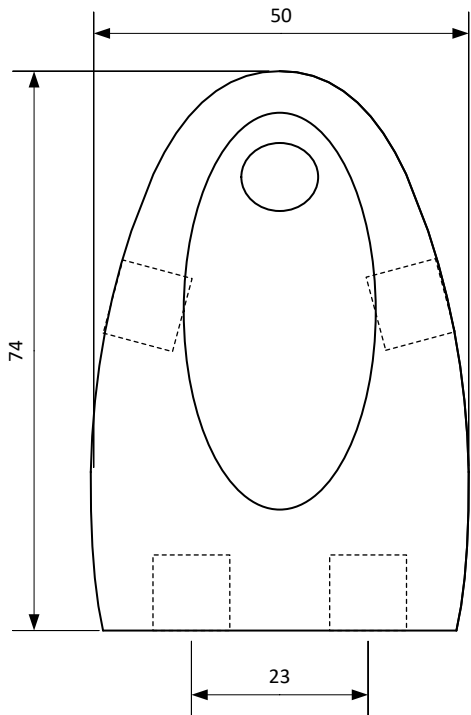
PC

CHANGES:

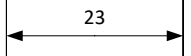
PAGE:

1 OF 2

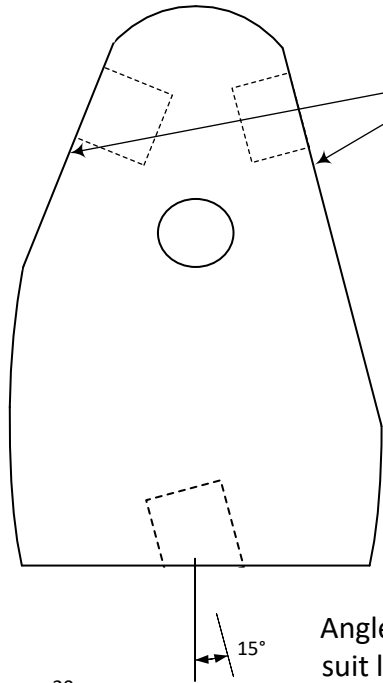




Spacing to suit width of boots

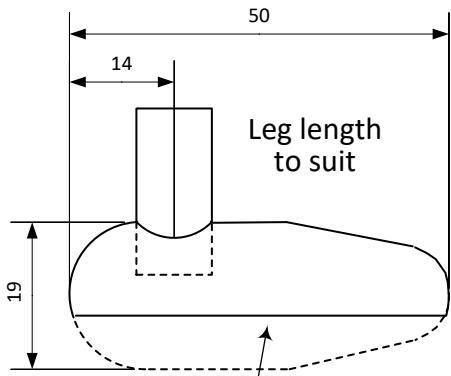
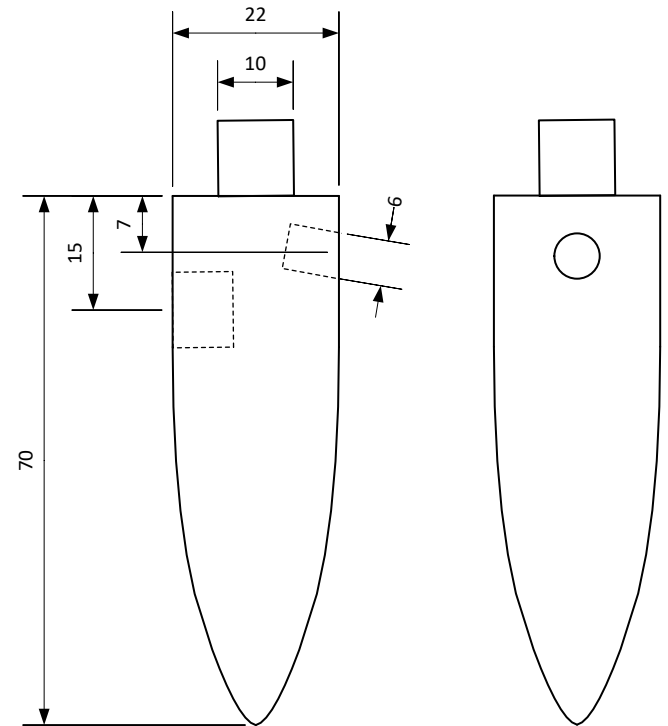


All holes 10 dia unless specified



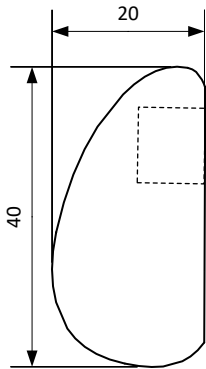
Flatten faces on belt sander

Angle to suit legs

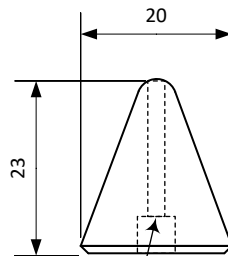


Leg length to suit

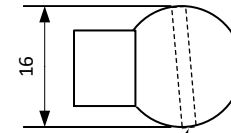
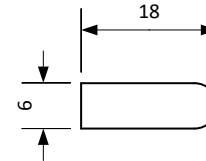
Flatten face on belt sander



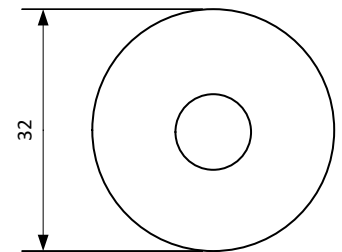
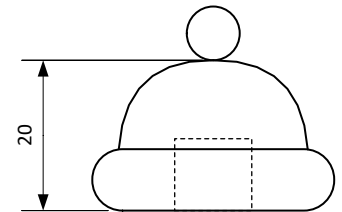
Shape sack to suit and flatten face on belt sander



2.5 dia. Countersink 5 dia to hide knot



2.5 dia. Angle to achieve 15 deg. off vertical



TITLE:

CLIMBING FIGURE - SANTA

REV:

01

REV:

01

DRN:

PC

CHANGES:

PAGE:

2 OF 2

