

# Splinters

The Newsletter of  
Christchurch Woodturners  
Association Inc



*Neil Joynt demonstrations and workshops*

Page 2  
Upcoming Events

Page 4&5  
July Competition  
Table

Page 7 to 9  
Spin Around  
Waitaki

## Upcoming Events

### Woodturning at Auburn Reserve Workshop.

Every Thursday 1pm to 4pm and 7pm to 9pm  
\$5 for either or both sessions

There is some wood at the workshop but bring your own if you can  
There are tool sets available

- 22nd Sept**    **Woodturners Worldwide Online Symposium**  
to  
**26th Sept**    see: <https://www.woodturnersworldwide.com/>
- 23rd Sept**    **Club Meeting** The HARVARD Community Lounge Corsair Drive Wigram  
Wednesday at 7:00pm. Mark Teeboon will be demonstrating Christmas Bells  
Bring \$10 for a raffle ticket – see page 3
- 3rd Oct**        **NAW AGM** 1pm at Taupo Jamboree, Wairakei School, 2 Kauri Drive, Wairakei.
- 7th Oct**        **Hands on Wednesday 7pm to 9pm** We will be having a look at Christmas Bells
- 14th Oct**       **Pyrography Group Meeting** on Wednesday 7pm to 9pm (New members welcome)
- 28th Oct**       **Club Meeting** The HARVARD Community Lounge Corsair Drive Wigram  
Wednesday at 7:00pm.  
Peter Hutchison Trophy Competition... see Page 6
- 30th Oct**       **Spin Around Waitaki** (Fri Sat Sun)  
**1st Nov**        with Peter Clemett see page 7 to 9
- 4th Nov**        **Hands on Wednesday 7pm to 9pm**
- 11th Nov**       **Pyrography Group Meeting** on Wednesday 7pm to 9pm (New members welcome)
- 17th Nov**       New NAW Class starts. See page 10
- 22nd Nov**       **Celebrate Bishopdale** 11am to 2pm, Bishopdale Park, Harewood Road  
Club members will be demonstrating and displaying woodturning.
- 25th Nov**       **Club Meeting Christmas Party** The HARVARD Community Lounge Corsair Drive  
Wigram Wednesday at 7:00pm.  
Jim Dunford Trophy Competition... see Page 6
- 2nd Dec**        **Hands on Wednesday 7pm to 9pm**
- 9th Dec**        **Pyrography Group Meeting** on Wednesday 7pm to 9pm (New members welcome)
- 29th to Jan**    New date for the collaboration weekend  
**31st 2021**





# **NATIONAL ASSOCIATION OF WOODWORKERS INC FUNDRAISING RAFFLE**



**1st Prize:**

**NOVA ORION LATHE**

Valued at \$4399 - Sponsored by

**CARBATEC & NOVA**

**2nd Prize: CARBATEC \$200**

Gift Voucher, NAW Polo and free  
NAW membership to 31/3/22

**3rd Prize: NAW Polo and free**

NAW membership to 31/3/22

**Closes: Tickets for sale at NAW affiliated woodworking clubs until 30 November 2020. Tickets also available until 14 December 2020 by emailing [raffle@naw.org.nz](mailto:raffle@naw.org.nz), or from our sponsors CARBATEC & TIMBERLY WOODTURNING & at the Drawing Event 15 Dec 2020.**

**Draw: 7.00pm 15 December 2020 at North Shore Woodturners Guild, Agincourt Reserve, Glenfield, Auckland**

**Results: Published on NAW Website and in December NAW Now**



**Organisations benefiting: National Association of Woodworkers Inc and participating NAW Affiliated Woodworking Clubs.**

**Delivery of 1st Prize anywhere in NZ kindly sponsored by TIMBERLY WOODTURNING**



July Competition Table





July Competition Table



## July Demonstration ~ Wet turning bowl blanks ~ with Noel Graham

Noel had a talk about wet turning bowl blanks and various methods of accelerating the drying procedure and how to reduce cracking failures including boiling the blanks, freezing them and then drying them in a fridge and microwaving them. Sometimes the blanks will dry oval and Noel discussed various methods of rechucking blanks that have oval spigots.



### Peter Hutchison Trophy Rules 2016

The competition will be held on the at our monthly meeting on the 28<sup>th</sup> October. Entrants must be financial members of the Christchurch Woodturner's Association at the time of the competition. Only one entry allowed per member. Work must be the member's own. A "work" may be either a single item, or consist of multiple, related parts. At least some aspect of the work must have been turned on the lathe. The scope of Colouring and/or Embellishing includes, but is not necessarily limited to, one or more of: paint; dye; ink; carving; burning; pyrography; scroll saw and, incorporation of other materials etc.



### Jim Dunford Memorial Trophy 2019

The Jim Dunford Trophy Competition will be judged at our Christmas breakup meeting on Wednesday 25th November. The competition is to make a wig stand or "Beads of Courage" box. Entrants must be financial members of the Christchurch Woodturner's Association at the time of the competition. Only one entry allowed per member. Work must be the member's own. A "work" may be either a single item, or consist of multiple, related parts.



## Spin Around 2020

### Demonstrator – Peter Clemett



This weekend is about turning a bowl and then modifying it into another form. Works of this nature are an opportunity to stretch your imagination in different ways and to apply the multitude of embellishment ideas and techniques in your personal toolbox. They are also a great platform for collaboration with others.

#### Project 1

Alan Carter was a guest demonstrator at the 2012 Woodturning New Zealand International Symposium where he presented the making of “split-turned vessels”.

Our first project will be a sculptural piece inspired by Alan’s work. This will introduce some of the design considerations and techniques which can be built upon in your future work. We will step through the process of planning the form, turning a shallow bowl, cutting and re-joining it, closing-in, applying embellishment, and fitting a stand and finial. Along the way we will discuss the use of contrasting forms, timbers, textures, and colour to create unique sculptural pieces.



Timber requirements for Project 1 (all timber should be dry and free from cracks and inclusions):

- Several blanks around 150-200mm diameter and 40-50mm thick

- A selection of blocks or offcuts for stands and finials

- Small pieces of decorative or contrasting wood for inlays



#### Project 2

Amongst other outstanding artists who have embraced the possibilities of the cut and rejoin method is Marilyn Campbell who favours open forms and strong contrast. Our second project will be an open form with shaped edge inspired by Marilyn’s work.

Some examples from Marilyn:



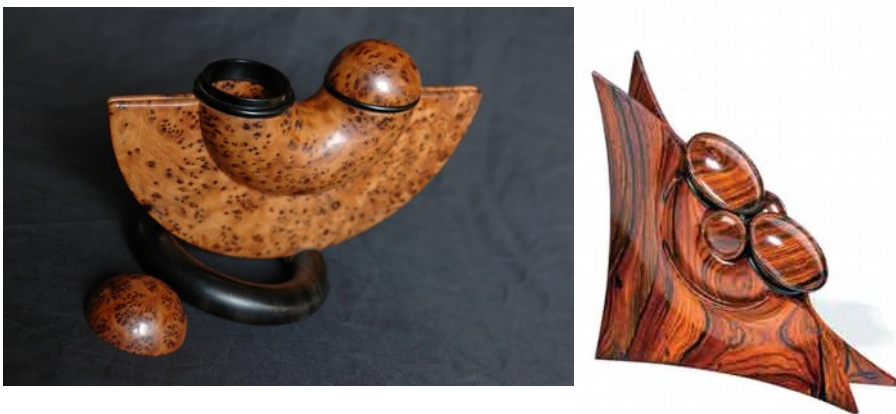
Timber requirements for Project 1 (all timber should be dry and free from cracks and inclusions):

Several blanks around 150mm-180mm diameter and 60mm thick

A selection of blocks or offcuts for stands.

### Project 3

Our final project is a step up for the adventurous, incorporating an emerging lidded box into the form. This time we are taking inspiration from the work of Jason Breach.



Some examples from Jason:

A prepared square blank around 160-180mm square and 40mm thick

A block of matching timber for a lid, approximately 70mm cubed

A small piece of contrasting timber around 70mm square and 20 mm thick

### What to bring

Pencil, ruler, sketch book or paper. A small compass for drawing circles will be useful

Safety gear, to include face shield or safety glasses, and dust mask

Lathe, chucks, faceplate, centres etc. Mini spigot jaws or a Jacobs chuck with drawbar will be useful for turning finials if your blanks are small.

Normal turning/finishing equipment - gouges/chisels, calipers, sanding tools and paper, CA glue etc.

A hot melt glue gun and glue sticks. A heat gun or hairdryer for softening the glue may also be useful.

A coping saw if you have one



Masking tape and a few rubber bands for glue clamping. Small clamps may be useful if you have them

Embellishing equipment and materials, as you prefer

A pyrography unit and selection of tips

Acrylic paints a few small brushes and a mixing tray. Bring a few of your favourite colours. Metallic paints (eg. Deco Art *Dazzling Metallics*) work well, but you might also like to try iridescent colours, inks or dyes if you have them.

Texturing/piercing/carving tools (Dremel or Micromotor and a range of burrs and bits)

Metal leaf and size

A magnifier and light if it will help you see fine detail. Headband magnifiers are convenient.

## References

Alan Carter <https://www.facebook.com/AlanCarterStudio/>

See also the construction article published in the UK *Woodturning* magazine (issue 245 October 2012).

Marilyn Campbell <https://marilyncampbell.ca/>

Jason Breach <http://www.jasonbreach.co.uk/>

See also Jason's article in *Woodturning* (issues 342 March, 343 April 2020) on the construction of his *Orbital Arc* box (pictured below)

The book *Woodturning Evolution*, a collaboration between David Springett and Nick Agar, contains many projects which apply the same principles to produce some unique and interesting forms.

## New Class starts 17<sup>th</sup> October

A new NAW class starts on 17<sup>th</sup> October. This will consist of a two day "Introduction to Woodturning" held on Saturdays 17<sup>th</sup> of Oct and the 21<sup>st</sup> of November and will progress to Level 2 3 and 4 on the third Saturday of each month for the next three years if you decide to continue. If you are interested or know someone who is contact Noel Graham 349-8976 to get more information or enroll in the course.

### 2019/20 Contact Details

Patron: Soren Berger 388-1004.  
Life Members: Bruce Irvine 358-8482.  
Rex Marshall: 352-9297.

#### Committee:

President:	Ray Hall: 388-7277.	president.chchwoodturners@gmail.com
Vice President:	Rick Bolch: 980-5156.	
Treasurer:	Bill Parsons: 351-5647.	treasurer.chchwoodturners@gmail.com
Secretary:	Ray Morgan: 366-9795.	secretary.chchwoodturners@gmail.com
Newsletter:	Joe Hayes: 385-3910.	
Web Master:	Ray Hall: 388-7277.	webmaster.chchwoodturners@gmail.com
David Caddie:	384-3984.	
Peter Clemett:	342-5242.	membership.chchwoodturners@gmail.com
Evan Gow:	18 021-033-8065.	
Noel Graham:	349-8976.	
Alistair Judd:		
Keith M <sup>c</sup> Fadden:	352-0333.	
Dee Morgan:	359-4386.	