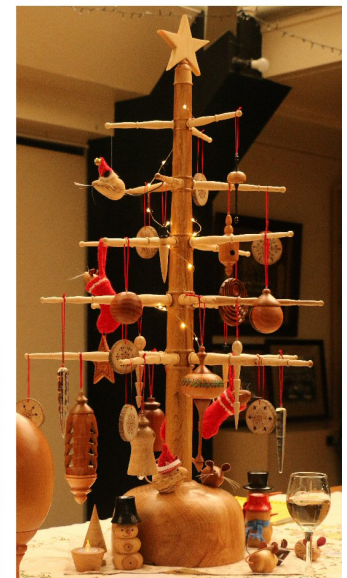
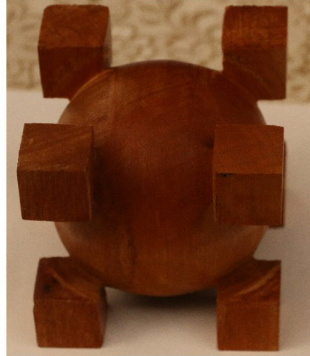


Splinters

The Newsletter of
Christchurch Woodturners
Association Inc



Graduation Project Display Table

Upcoming Events
Page 2

Woodwork Museum
Brisbane
Page 4&5

Graduation Diner
Page 7

Upcoming Events

Woodturning at Auburn Reserve Workshop.

Every Thursday 1pm to 4pm and 7pm to 9pm

\$5 for either or both sessions

There is some wood at the workshop but bring your own if you can

There are tool sets available

Woodturning at St Albans Menz Shed 36 Nancy Ave.

Every Tuesday 1pm to 4pm ~ See Rex for details

23rd Nov **Open Workshop** Sat 10am to 4pm (Ideal chance to catchup on any Classes you might have missed)

27th Nov **Club Meeting** The HARVARD Community Lounge Corsair Drive Wigram
Wednesday at 7:00pm. This will be our Christmas Breakup Party – Partners and friends are welcome. Bring a plate of finger food (Plate does not have to be wood)
The Peter Hutchison Trophy competition will be judged at this meeting.

30th Nov **Open Workshop** Sat 10am to 4pm (Ideal chance to catchup on any Classes you might have missed)

If you are coming to catchup on a class you have missed can you email Noel five days before you come to ensure we have the wood and tools required for the class you want to catch up on.

Noel's email address is noel_chris_graham@xtra.co.nz

4th Dec **Hands on Wednesday 7pm to 9pm** We will be having a look at the Christmas decorations turned by Noel, Rex and Peter at the Club Meeting in November

11th Dec **Pyrography Group Meeting** on Wednesday 7pm to 9pm (New members welcome)

The workshop will be open for the usual Workshop sessions on:

Thu 29th Nov 1pm to 4pm and 7pm to 9pm

Thu 5th Dec 1pm to 4pm and 7pm to 9pm

Thu 12th Dec 1pm to 4pm and 7pm to 9pm

Thu 19th Dec 1pm to 4pm and 7pm to 9pm

Thu 9th Jan 1pm to 4pm and 7pm to 9pm

Thu 15th Jan 1pm to 4pm and 7pm to 9pm

Thu 23rd Jan 1pm to 4pm and 7pm to 9pm

Thu 30th Jan 1pm to 4pm and 7pm to 9pm

28th and 29th March 2020 we will be holding the “**Christchurch Woodturners Collaboration Weekend**”. There will be more details about this event in the January or February Newsletters.

Back to Basics with Noel Graham ~ September Demonstration

Noel showed us a selection of various shaped bowls , and told us the story behind a completely round base bowl. The selection included a hexagon shape bowl, a square winged sushi bowl , a small bowl on a stand and a bowl with very small feet left on. Good examples of items which could have been improved with a bit more skill and experience and tuition. Noel suggested that you need to start with a picture on paper, or at least in your head!! A selection of small vases was shown with much the same story. Some salt and pepper grinders were shown, but the emphasis being on the shape and the ability to feel good so that people would want to use them. Small vases however are required to look good with nice flowing lines. At this stage Pat Jordan asked for time to talk and explained how bowls seemed to look better if the angle between the outer diameter and the rim was approximately 90 degrees. Noel set up a blank piece and after turning a 50 mm. spigot, he shaped out the outside diameter of a bowl. The spigot was then held in a chuck and the bowl hollowed out, using fingers for thickness gauge. You should be asking the question, " why you like or dislike an item ???"

Rick Bolch Scribe

Change to the monthly date of the "Hands On" session at the Auburn Reserve Workshop

Historically we have held the monthly "Hands On" session on the third Thursday of every month. We are now getting a lot of new turners attending the Thursday night sessions and this is making the "Hands On" sessions a bit tricky. The Committee have decide that we will change the Hands On night to the **Wednesday** Night after Club Night. Club Night is always on the forth Wednesday of the month so the Hands On session will now be on the following **Wednesday** night. Sometimes this will be the 5th Wednesday of the month and sometimes it will be the first Wednesday of the next month.

The Hands On session usually has a topic and in recent months we have been basing the sessions on the demonstration from the previous Club Night at Wigram. This new time table will allow us to have the Hands On session a week after the Club night while the demonstration is still fresh in our memory.

The "Hands On" session is both a chance to try out some new techniques but also to bring along any problems or questions you might have. We can look at sharpening techniques, chisle presentation to the work, sanding tips and tricks, picking the right tool for the job ~ all that sort of thing. If you get a catch and you know why that's not a problem. If you are getting a catch and you don't know why, come and have a talk about it and there is bound to be a turner in the group who can help you out.

Change to the monthly date of the Pyrography Group meeting

The Pyrography Group monthly meeting will now be on the second **WEDNESDAY** of each month. Sessions will be from 7pm to 9pm. This means that we will not clash with the Thursday open workshop noise and dust wise and members who are also members of the Christchurch Woodworkers Guild (who meet on Thursdays) will be able to come along to the pyrography group. The first meeting of this group will be on Wednesday 11 December and then on January the 8th. This is an open group ~ anyone can attend. If you are new to pyrography we will start you off on some sampler boards at your first few sessions

Woodworks Museum and Interpretive Centre Visit by Dee Morgan

Last week, my hubby and I were in Brisbane visiting family. Our son and daughter-in-law took us up to Gympie (Sunshine Coast) to the Woodworks Museum. What a spectacular place. I am not a woodturner, my hubby is, but even I found it informative, interesting and full of neat stuff.

They had their grand opening in March 1984. It is run by volunteers and staff paid by Private Forestry Service Queensland; and relies on donations of equipment and memorabilia for its displays. There are also pieces available for sale (not all wood pieces either as I purchased handmade cushions as well as a couple of Christmas decorations).

The museum was established to provide a refuge for the history of the forest and timber industries in that area. They have managed to preserve artefacts and traditions associated with forestry with forest development and conservation, production and distribution of timber, and timber products.

When you first walk in there are information panels that guide you into the museum proper. These have been installed to illustrate the history of the Museum itself and the Queensland timber industry. There are static and working exhibitions that trace the development of the forest and timber industries, which, historically ranges from often dangerous manpower-intensive operations to mechanised and safer processes.

The building itself is made from rough-sawn tallow-wood and spotted gum. The construction reflects the bush-style architecture that follows the rolling topography of the site, resulting in a multileveled building with sunken demonstration pit and exhibition areas. Mezzanines above the pit provide excellent vantage points for visitors to watch demonstrations (when they are offered). Other woods found in the building construction are; Spotted Gum, Northern Silky Oak, Hoop Pine and Ironbark. Even the fencing, rails and walkways have been lovingly constructed from these timbers.

One of the first exhibitions is a massive Hyne Timber Bandsaw. I took a photo of my hubby (Don Morgan) next to it so you can get an idea of just how huge the bandsaw itself is. Each tooth of the bandsaw is the width of a normal sized human finger. The bandsaw is 14.7 metres long, 2.4 mm thick with a swaged tooth at 3.4 mm and a pitch of 50 mm and gullet depth of 19 mm. The blade was strained to 6800 kg and spun at around 1982 metres per minute (almost 119 kph). It could cut a 600 mm deep cut at a feed speed of 44 metres per minute. It was dedicated to the museum on its 30th birthday back on 2014 by Chris Hyne of Hyne Timber.

There is a historical corridor, propagation and planting display, various tools, and machines. Many of the machines are pedal powered, such as a foot pedalled lathe/universal machine. My hubby is demonstrating this machine. It is incredible how complex this multimachine is. There were certainly some amazingly talented craftsmen back in the day. This machine has an adjustable and tiltable table, adjustable tool rest for tool steel. The steel rest tool is fitted with a drilling lever and chuck. It admits 13 inches between centres; and swings up to eight inches on the face plate. From the bed to the centre spindle it measures six inches, with the bed itself being eight by five inches.

The display cabinets are beautifully laid out, with all the articles being clearly numbered and a corresponding chart on the wall that gives a brief and informative blurb on each article or item.

Surprisingly (well, for me at least) was a Kauri Pine Disc. This first started growing in North Queensland in 1320. Yes, 1320. It was felled in 1939 – over 600 years later. It is a massive 2.59 metres in diameter. Interestingly, the cross section of the trunk shows the momentous world events over the last six centuries as they are all plotted on the tree's growth rings.

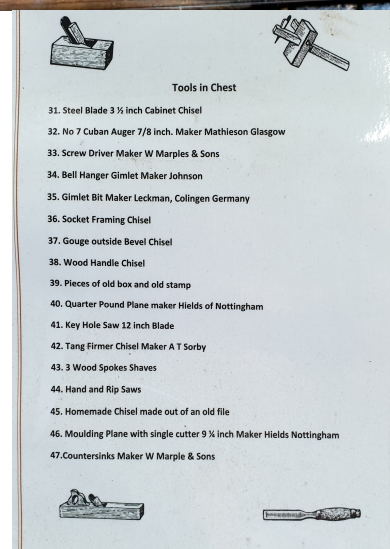
Jim Grant and Len Green donated one of their pieces of art. It is a large sphere, made up of 11 different species of local timber. They took nine months to collect the timber and fabricate, shape and polish the sphere. There are 20 hexagonal and 12 pentagonal segments, each being 100 mm thick. They are all mounted on a fibreglass lining. The final shaping was done with a router mounted on an external frame. It is 890 mm in diameter, with a circumference of 2.8 metre and weighing 100 kg.

There is a fabulous floor display that shows many different timbers that line up to a large photograph of the tree. The display has details of each tree's durability, strength, flowering season, and a list of what that timber can be used for.

Other displays are; a saw pit, sample mine shaft, republic truck that was used to winch timber in the USA in 1925, drag saw, mobile buzz saw, a huge array of chainsaws, bullock team equipment, wood copy lathe (probably my favourite item), wagon wheels, wagons, and much more. There was also a working blacksmith's shop, full of gear, a timber cutter's camp, including a bark-hut, and a steam driven working sawmill.

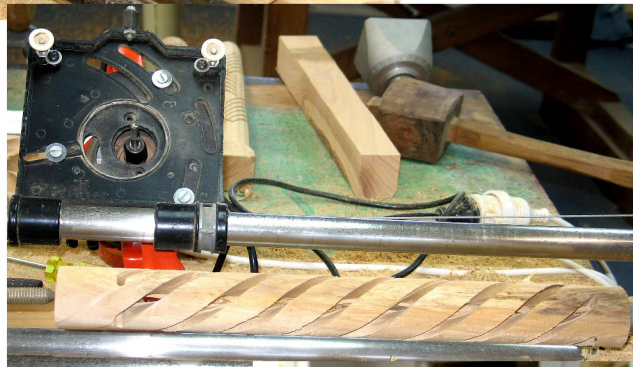
At some of the displays was a commentary about that display. This was great, because you got to learn even more about that display and how it was used and what it was used for. These displays just showed how clever our recent ancestors were.

I thoroughly recommend people should go and enjoy a morning or afternoon at this museum. The address is 8 Fraser Road, Gympie, Queensland 4570. The only thing missing was a café. They should have served basic tea and coffee with scones and club sandwiches. Still, there are cafés just a few minutes away in the township of Gympie. Check out their website, www.woodworksmuseum.com.au.



Router Lathe Workshop (Sat October 26th)

The Router Lathe is a device for cutting spiral or linear flutes in spindles. It is a hand turned lathe that draws a router along the length of a spindle on an endless wire loop. The lathe has an indexing device so that spirals and linear flutes can be made at even positions around the circumference of the spindle. For this sessions we were using Sears and Robuck ~ Craftsman Rotary Lathes. These have 24 indexing positions. There will be one or two of these router lathes at the workshop for the next two or three months so if you want to have play, have a talk with Noel or Joe and they will get you started.



Graduation Diner

On Wednesday 13th November we held a diner for the Graduating students from classes 11,12 and 13. This was also an "End of Year" diner for the club in general. Pictures of the students graduation pieces are on the front page of this news letter.

The following turners graduated in 2019:

Amelia Botting, Amon Brown, Angela White, Arnold Dawson, Evan Gow, Graham Copp, Jared Steven, Joanne Kelegham, Jonathan Foate, Peter Ross and Trevor Daniels.



Christmas Beakup Meeting ~ Wednesday 27th November at Harvard Lounge Wigram

Partners and friends are most welcome.

Bring a plate of finger food (Plate does not have to be wood)

Peter, Rex and Noel will be demonstrating "Christmas Themed Projects"

Christmas themed raffle – Quiz – Plenty to eat and drink

The Peter Hutchison Trophy competition will be judged at this meeting. Two judges from the Committee have been selected to judge this competition. The topic for the competition is Christmas Ornaments and the emphasis is on colour and embellishment. (more details further down this page.

There will also be the final Competition Table for the year. This will have double points. The points will be totalled over the year and the winner will be awarded the "Show Table Trophy"

Peter Hutchison Memorial Trophy 2019

The competition will be held at the November Club Meeting on Wednesday 27th November at the Harvard Lounge Wigram. The competition this year is to produce a "Christmas Ornament". So that can be anything from Christmas Tree Decorations to Snowmen, Father Christmas with sledge and reindeer to a nativity scene. The emphasis of this competition is on Colour and Embellishment. Entrants must be financial members of the Christchurch Woodturner's Association at the time of the competition. Only one entry allowed per member. Work must be the member's own. A "work" may be either a single item, or consist of multiple, related parts. At least

some aspect of the work must have been turned on the lathe. The scope of Colouring and/or Embellishing includes, but is not necessarily limited to, one or more of: paint; dye; ink; carving; burning; pyrography; scroll saw and, incorporation of other materials etc.



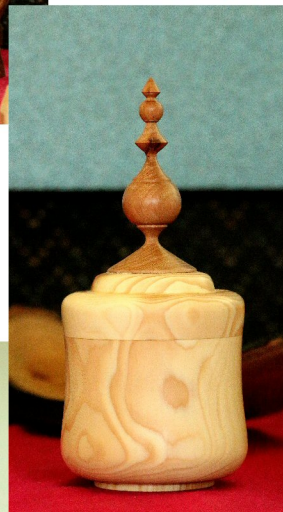
Call for input from Club Members

In January the Committee will be organising the list of topics for Club Night Demonstrations for the 2020 year and also identifying topics for the 4th Saturday workshops each month. We would like some input from members as to topics you would like to see covered in Demonstrations and Saturday workshops. We are still planning on having a Saturday workshop on Segmented Turning. This will be slotted into the Workshop schedule for 2020. We are aware of some club members who are keen to get more experience with the use resin in woodturning. We are still hoping to have a Club Night Demonstration on this topic. Also we are planning on having a Hands On practical session with the use of resins. This will probably be held over a Wednesday and Thursday night so that we can pour the resin on the Wednesday, let it harden overnight and turn it on the Thursday.

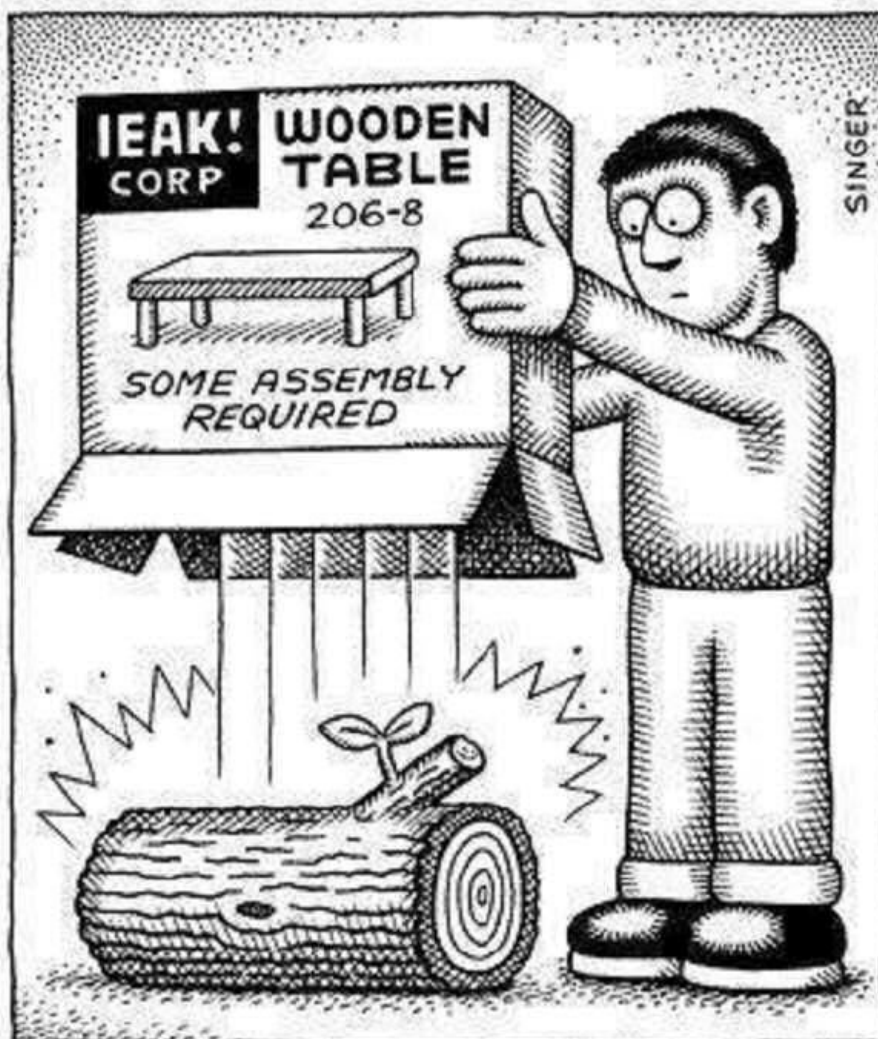
Spin-A-Round Waitaki 2019

This event was held on the 1st, 2nd and 3rd of November in Oamaru. Neil Joynt was the demonstrator. The photos on this page show some of Neils demonstrations and the photos on the next page show the workshop, lecture area and some of the pieces on display from people attending the event.





Lim (Boon Lim Tan) has joined the Splinters team as our photographer. Lim took most of the photos in this edition of Splinters. It is great to have him on board and you will see him taking photos at many of our events in the future.



2019/20 Contact Details

Patron: Soren Berger, 25 Rodney St, New Brighton; 388-1004.

Life Member: Bruce Irvine, 401 Withells Rd, Avonhead; 358-8482.

Committee:

President: Ray Hall: 10 Halsey Street, South New Brighton; 388-7277.

Vice President: Rick Bolch: 28 Waiau St, Hoon Hay; 980-5156.

Treasurer: Bill Parsons: 76 Fendalton Rd, Fendalton; 351-5647.

Secretary: Ray Morgan: 154b Brookside Rd, Rolleston; 366-9795.

Newsletter: Joe Hayes: 130 Petrie St, Richmond; 385-3910.

Web Master: Ray Hall: 10 Halsey Street, South New Brighton; 388-7277.

David Caddie: 23 Butts Valley Road, Heathcote. phone 384-3984.

Peter Clemett: 36a Fenhall St, Russley; 342-5242.

Evan Gow: 18 Creese Place, Redwood Christchurch. 021-033-8065.

Noel Graham: 63 Oakley Cres, Hornby; 349-8976.

Alistair Judd: 39 Waipara Street Cracroft Ch ch 8025.

Keith McFadden: 46 Coolspring Way, Redwood; 352-0333.

Rex Marshall: 396 Greers Rd, Bishopdale; 352-9297.

Dee Morgan: 69A Trafford St, Harewood; 359-4386.