



Splinters

The Newsletter of
Christchurch Woodturners
Association Inc



Lichenburg Figures Demonstration at the Auburn Reserve Workshop

Page 2
Upcoming Events

Page 6
Workshop News

Page 7
Neil Turner Demonstration

Upcoming Events

Woodturning at Auburn Reserve Workshop.

Every Thursday 1pm to 4pm and 7pm to 9pm

\$5 for either or both sessions

There is some wood at the workshop but bring your own if you can

There are tool sets available

Woodturning at St Albans Menz Shed 36 Nancy Ave.

Every Tuesday 1pm to 4pm ~ See Rex for details

- 21st Feb** **Hands On** Thursday at 7:00pm at the Auburn Reserve Workshop
We will be having a look at making a Quaich (Scottish two-handled drinking vessel)
as demonstrated by Peter Clemett at the January meeting
- 23rd Feb** **Chainsaw** safety, sharpening and maintenance workshop.
Saturday 10am to 2pm at the Auburn Reserve Workshop \$5
- 27th Feb** **Club Meeting** The HARVARD Community Lounge Corsair Drive Wigram
Wednesday at 7:00pm. Demonstration is Off Centre Spindle Turning with Noel
- 7th Mar** **Air Brush 101 ~ Dots Lines and Circles**
Pre-school for Air brush techniques
Thursday at the Aubury Domain workshop \$5
- 23rd Mar** **All things Easter.** Bunnies, Eggs and Chickens with special emphasis on
various colouring techniques. Saturday 10am to 4pm \$5
- 27th Mar** **Club Meeting** The HARVARD Community Lounge Corsair Drive Wigram
Wednesday at 7:00pm. Demonstration is Celtic Knots with Rex
- 1st April** **Neil Turner Demonstrations**
Monday at the Auburn Reserve workshop see Page 7 for details
- 4th April** **Armstrong Steady Demonstration and "Hands On"**
Thursday at the Auburn Reserve workshop. Rex will be demonstrating and we will
all be trying out hand steadying techniques on very thin finials and spindles.
- 26th June** **Club Meeting** The HARVARD Community Lounge Corsair Drive Wigram
Wednesday at 7:00pm. Demonstrator will be Dick Veitch from the South Auckland
Club and his demonstration will be "Lets enhance a small bowl"

Making a Quaich with Peter Clemett ~ January Demonstration

A Quaich is an ancient Scottish two handled drinking vessel. Peter talked about the various size options and uses and showed us some pictures of a variety of them. Also included a picture of Prince Charles drinking from a quaich. Before starting, consider the style, size, purpose, form, decoration and final destination of the piece ..

Peter set up a rectangular piece of Macrocarpa on a face plate, and turned a 50 mm step to hold in the chuck. The outside of the bowl and the underneath of the handle was turned, finishing off with a small finger gouge. The piece was then set up in the chuck and the top of the bowl and handle roughly shaped out. The flow line of the bowl was followed above the handle line and a small lip was formed, and the top and the outside diameter of the handles also finished off. After marking out the desired handle shape, the piece was held in the chuck and the excess wood removed with a coping saw. A jam chuck was put in the chuck and the bowl was held in position using the tail stock centre, whilst the base of the bowl was tidied up. Thus finishing off another very interesting demonstration. Three of Peters Quaich's were passed around, with one having a pewter drinking rim insert.

Rick Bolch (Scribe)





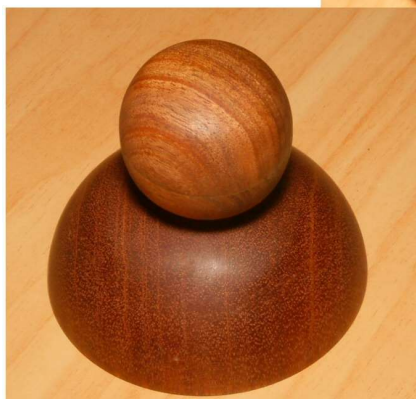
**1st
Campbell
Botting**

**2nd
Peter
White**



**3rd
Don
Morgan**

January Competition Table



January Competition Table

Workshop News

The Lichenburg Figures Demonstration went well with 14 people attending including two from Timaru. There are photos from this demonstration on the front page.

The February 4th Saturday Workshop is "Chainsaw Safety, Use and Maintenance". This will be held at the Auburn Reserve Workshop starting at 10am and running through to 1pm or 2pm. The usual \$5 workshop charge apply. Email me at joe.hayes@trutrack.com if you are coming so that we have a rough idea of the numbers who are attending the workshop.

The topic for the March 4th Saturday workshop is "Easter ~ Eggs ~ Chickens and Rabbits" This will be on the 23rd of March.

We now have the tool board up in the workshop and the Jacobs Chucks now live on the tool board not in the cupboard. We will be adding tools to the board over the next couple of weeks including a set of metric Forstner bits. The next project is to get a large notice board installed on the west wall above the old fire place. We will be have a bit of a cleanup and repaint before the "Opening Ceremony" for the workshop rebuild. We hope to have information about this opening in the March Newsletter.

New lighting and electrical distribution has been working well for the NAW classes that have restarted in February. Noel is in the process of organising a bigger bandsaw. This will allow us to be able to cut thicker bowl blanks but it's use will be restricted to experienced club members. The smaller bandsaw will still be in the "Machinery Area" and can be used by anybody who has passed the Bandsaw course. We are also hoping to install some dust filters in the not too distant future.

The next 1st Thursday mini demonstration will be on March the 7th and we will have an introductory look at using air brushes ~ covering the basics ~ drawing dots, lines and circles.

The April 1st Thursday mini demonstration will be Rex having a look at the Armstrong steady. This is a technique for supporting very thin finials and spindles with your hand as you turn them. This session will be mainly "hands on" with Rex demonstrating the technique on a couple of projects and then everyone will have the opportunity to practice the method.

We are starting to get a good number of new turners turning up for the Thursday afternoon sessions which is great to see. We are looking forward to seeing how the club membership has increased when we compile the club role for 2019/2010 ~ Yes its nearly that time of year again.

Numbers attending the Pyrography group are starting to drop off as the nights start to get darker. We will definitely have meetings in March and April and then discuss if we are going to hibernate for the winter. The Christchurch Guild of Woodworkers will be attending 3 or 4 Pyrography classes so we will be asking some of our more experienced pyrographers to demonstrate. The Guild will then be organising some basic carving classes for us later in the year.

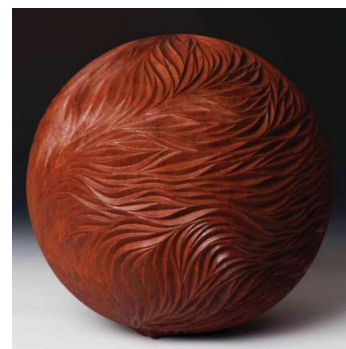
Neil Turner Tour

The National Association of Woodworkers has arranged for Neil Turner from Perth, Western Australia, to visit New Zealand from 1 to 17 April 2019. Neil is an excellent woodturner, great demonstrator, and great entertainer. If you need confirmation of that ask anybody who watched when he visited Spin Around in 2017, or attended his demonstrations at the 2018 New Zealand Symposium. Or, just have a look at his website [http:// www.neilturnerartisan.com.au/](http://www.neilturnerartisan.com.au/) and view the pictures there. There is opportunity here for every woodturner to learn new things. The plan for this tour is for Neil to arrive in Christchurch and tour the south before crossing to the north and continuing his tour.



	NAW members	Non-NAW
One demo subject	\$20	\$40
Two demo subjects	\$25	\$55
Three demo subjects	\$30	\$75
Day class One subject	\$80	\$130

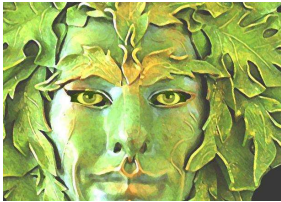
The Christchurch Club will be providing two or three demonstrations on Monday the 1st April, afternoon and evening. Probably 1pm and 7pm and there may be a late morning demonstration. The actual time and demonstration topics will be posted in the March Newsletter.



Wood Spirits and Green Men



The legend of the wood spirit dates back to the 15th century in the Black Forest of Germany. People believed the forests and trees were inhabited by mystical spirits, thought to protect the forest and animals from those with evil intent. This was evidenced by the sounds of moaning and sighing among the trees on days when storms were brewing, and the peace and tranquility in the forest on calm days. It was believed that everything majestic and vibrant about a healthy forest was the work of the wood spirit. They were the guardians and protectors of all forest life.



The belief was so ingrained in the myth and lore of the region that when a tree was cut down, rituals were observed to appease the spirit that resided within the wood.

Some cultures would place a traditional section of freshly cut wood under the bed of a newborn child. It would not be removed until the child grew to adulthood. Then the parents or caregivers would take the section of wood to the village wood carver to summon forth the image of the wood spirit using his knives and chisels. The wood spirit was believed to cast away bad luck and evil beings while acting as a spirit guide and protector for the lifetime of the person, and beyond. When the person passed away the section of wood was burned in a ceremony and the ashes spread over the grave site so the wood spirit could accompany the person into the afterlife. In other cultures villagers would display wood spirits in the village square and sometimes in their lodges to protect against the evil beings from the dark forest places.



Travelers assured their safety through the forests by carving wood spirit images on walking sticks or pieces of wood and bark. These carvings appeased the spirits thus the traveler was allowed to enter and leave the forest without difficulty. Catching a glimpse of a wood spirit in the forest was said to be a lucky thing, guaranteeing health, happiness and good fortune.



Today wood spirits are still being carved into pieces of wood, though mostly as works of art, and are often given as gifts. Wood Spirits go by several names: Wild Man - Savage Man - Woodwose - Tree Spirit - Green Man. Give your wood spirit a special place in your home, and you never know what good luck and fortune it may bring.



Reasons why you should join The National Association of Woodworkers NAW

Creative Wood

Four copies per year of our award winning magazine Creative Wood.
This is packed full of information relevant to today's woodworkers.
Open invitation to write articles for publication in Creative Wood.

CSC membership discount card

NAW members benefit financially from the annual membership discount card.
This card gives discounts at a wide range of relevant organisations.

NAW Public Liability Insurance

Which covers members participating in club-approved activities.

NAW website

Provides a platform for members to obtain information about woodworking activities nationwide.
Provides access to extensive photo galleries for members to enjoy and learn from.
Provides a list of New Zealand NAW-affiliated clubs, their meeting times and full contact details.
Provides an approved list of demonstrators that individuals can contact for tuition.

National Certificate of Woodturning

NAW offers each member the opportunity to upskill through the woodturner training programme:
National Certificate of Woodturning.
This programme is run through local NAW-affiliated clubs. Contact your local club for more information.

Sponsorship

NAW members get significant discounts on entry fees to NAW sponsored events.
NAW regularly tours top woodworkers from overseas, to keep our members up to date with the latest ideas and techniques from overseas.

2018/19 Contact Details

Patron: Soren Berger, 25 Rodney St, New Brighton; 388-1004.

Life Member: Bruce Irvine, 401 Withells Rd, Avonhead; 358-8482

Committee:

President: Rick Bolch: 28 Waiau St, Hoon Hay; 980-5156.

Treasurer: Bill Parsons: 76 Fendalton Rd, Fendalton; 351-5647.

Secretary: Ray Morgan: 154b Brookside Rd, Rolleston; 366-9795.

Newsletter: Joe Hayes: 130 Petrie St, Richmond; 385-3910.

Web Master: Ray Hall: 10 Halsey Street, South New Brighton.

David Caddie: 23 Butts Valley Road, Heathcote. phone 384-3984.11

Peter Clemett: 36a Fenhall St, Russley; 342-5242.

Evan Gow: 18 Creese Place, Redwood Christchurch. 021-033-8065

Noel Graham: 63 Oakley Cres, Hornby; 349-8976.

Keith M^cFadden: 46 Coolspring Way, Redwood; 352-0333

Rex Marshall: 396 Greers Rd, Bishopdale; 352-9297.