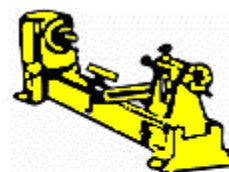


Christchurch  
Woodturners  
Association Inc.

# Splinters

Newsletter of the Christchurch  
Woodturners' Association Inc.

[www.woodturning.nz](http://www.woodturning.nz)



Christchurch  
Woodturners  
Association Inc.



*Neil Turner*



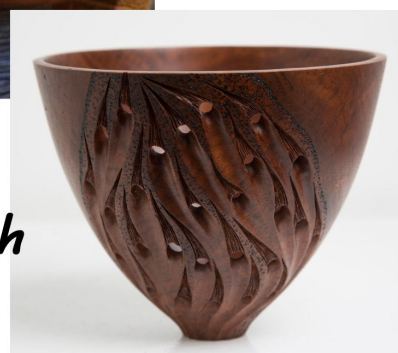
*Spin  
Around*



*Waitaki*



*Oamaru  
27th to 29th  
October*



Page 2  
Upcoming Events

Page 8 and 9  
Robert Sorby Demo

Page 10 and 11  
Spin Around Waitaki

## Upcoming Events

**Woodturning at St Albans Menz Shed** 36 Nancy Ave. Every Tuesday  
1pm to 4pm ~See Rex for details

**20<sup>th</sup> July Hands On at Cobham** Thursday 7pm  
We will be having a look at some Plywood turning videos

**26<sup>th</sup> July Club Meeting** Wednesday at 7:00pm  
The HARVARD Community Lounge Corsair Drive Wigram  
AGM - AGM - AGM - AGM - AGM - AGM - AGM - AGM – AGM  
Peter Clemett will be discussing Tips and Techniques for “Production Turning”

**17<sup>th</sup> Aug Hands On at Cobham** Thursday 7pm  
Production Turning using some of tips and techniques outlined by Peter in his July demonstration

**23<sup>rd</sup> Aug Club Meeting** Wednesday at 7:00pm  
The HARVARD Community Lounge Corsair Drive Wigram  
Demonstration will be Keith McFadden’s Homemade Ornamental Lathe

**14<sup>th</sup> Sept Pyrography Group** Restarts after the winter break at Cobham  
Thursday 7pm. We will be having a look at the new Sorby Pyrography pen and at their new Spoon Point Nib

**21<sup>st</sup> Sept Hands On at Cobham** Thursday 7pm  
There will be a general discussion on the history and development of ornamental lathes and possibly a look at a CNC router

**27<sup>th</sup> Sept Club Meeting** Wednesday at 7:00pm  
The HARVARD Community Lounge Corsair Drive Wigram  
A number of different demonstrators will have a look at embellishment techniques

**25<sup>th</sup> Oct Club Meeting** Wednesday at 7:00pm  
The HARVARD Community Lounge Corsair Drive Wigram  
Peter Hutchison Trophy Judging and Presentation

**27<sup>th</sup> - 29<sup>th</sup> October Spin Around Waitaki** at Oamaru  
Guest Demonstrator is Neil Turner  
Details on Page 10 and 11

## **Possible Workshop for the Christchurch Woodturners Association**

The committee is presently in negotiations to try and establish a workshop for the Association. If these negotiations are successful we will be able to setup a workshop in the Church Corner area of Riccarton. This workshop will be used for Saturday classes, Hands On sessions and the Pyrography Group. It is envisioned that the workshop will be open at least one evening and one afternoon per week if not more. Our regular monthly club meetings will continue to be held at the Harvard Lounge in Wigram. It may take two or three months before we know for sure that we can establish this workshops.



## **Winged Platter with Arnold Memelink ~ May Demonstration**

Arnold had an oak blank set up in a screw chuck on the lathe and proceeded to cut the bottom of the blank, leaving a small step for the base. He turned the wings of the platter facing upwards. The piece was then turned around and held in the chuck in a prepared spigot. The top side of the platter was then turned, starting at the outer edge and slowly working towards the centre until a thickness of about 5 mm. was reached overall. This concluded the demonstration.

Rick Bolch (scribe)

photos on next page





**Winged Platter with Arnold Memelink ~ May Demonstration**





1st



2nd



### May Competition Table

## **The Pressies Piece.**

Where I live in Cracroft has had an eventful year ...First the Adventure Bike Park opened up nearby , then the Port Hills fire which burnt it down , Now a convoy of timber trucks coming out , whilst they dig up the area to install fibre broadband, hopefully to be followed by the installation of traffic lights at Worsleys Rd.!!

Our club should be the same, moving along , evolving , adapting !! otherwise we stagnate.... We have had the Glen Lucas demonstration tour , followed by the Carbatec demo. of Robert Sorby tools recently. We would like to slowly changing our show table , demonstrations and formats to retain our members interest as well.

As you know , we are looking at a hall in Riccarton to use as a permanent workshop which should give us more scope for classes and member activities. We would still retain our Wigram club meeting set up for the foreseeable future...

Having been to several Fun Days over the years , and seeing our show table , It seems to me that we have a very high skill level in our club , and you should all be congratulated for doing our learning courses and attending our meetings so reguarly. All part of our club keeping moving on !!!

Rick

## **Turning Plywood with Stuart Camp ~ June Demonstration**

Stuart showed us a plywood bowl with inserts and passed around photos of a bowl overlaid with measurements of plywood for cutting out purposes. This also helps with cutting out on the bandsaw.

He showed us a few vases with the grains in different directions to get different effects. Strips of darker timber such as purple heart can also be used between the plywood pieces with good effect.

If you have the right machinery , you can make your own sort of plywood , but this can be wasteful with many off cuts. Stuart had a bowl blank set up on the lathe and trimmed the outside diameter , pointing out that it is hard to sand paper due to the different grains and hardness of the ply and the glue. Then turned the face and hollowed out the inside to show the different grain effects.

Stuart showed us a photo on his phone of a bowl with some interesting inserts and challenged someone to figure out how it was done ! Several suggestions came from the members , maybe someone will bring a finished bowl next meeting....

Rick ( scribe )

(photos on next page)





Turning Plywood with Stuart Camp ~ June Demonstration

## **Peter Hutchison Trophy Rules 2017**

The competition will be held on the October Club Meeting on Wednesday 25<sup>th</sup> October at the Harvard Lounge Wigram.

Entrants must be financial members of the Christchurch Woodturner's Association at the time of the competition. Only one entry allowed per member. Work must be the member's own. A "work" may be either a single item, or consist of multiple, related parts. At least some aspect of the work must have been turned on the lathe. The scope of Colouring and/or Embellishing includes, but is not necessarily limited to, one or more of: paint; dye; ink; carving; burning; pyrography; scroll saw and, incorporation of other materials etc.

## **Robert Sorby Demonstration with Chris Pouncy**

Sorby have just taken over the distribution of Peter Child pyrography equipment. They have transformers, hands sets and nibs available. There will be a hand set and their new spoon nib available to have a play with at the next Pyrography Group meeting on Thursday 14th September at Cobham. The transformer, handset and some nibs are shown on the next page.

Chris also demonstrated the Pro-Edge sharpening system, the Spindle Master and some texture tools.

I had a chance to use the Spindle Master at one of our Cobham classes last Saturday. One of our students had bought one at the demonstration. It is sort of ½ way between a Spindle gouge and a skew chisel. It has a flat top surface that you sharpen with a diamond hone and a highly polished bevel that you don't touch with sharpening tools. This polished bevel (as well as supporting the cutting edge) is used to burnish the cut that you have just made leaving a nicely polished surface after you have made the cut.. There are photos of the top of the tool and the bevel at the top of the photos on page 9

Chris had a good look at creating traditional grinds and Irish grinds on bowl gouges using the Pro Edge sharpening system and a Tormek jig that they are now selling. The jig has three settings for giving long, very long and extremely long wings on Irish grinds. Chris emphasized the need for consistency of jig settings when we are sharpening gouges both to reduce the sharpening time and increase the life of the tool.

This demonstration was organized and sponsored by Carba-Tec and was attended by members of the Christchurch and North Canterbury woodturners and a number of Men's Sheds.





Robert Sorby Demonstration with Chris Pouncy



## **Weekend of Woodturning, Fellowship, Learning & Sharing.**

GUEST TURNER is Neil Turner from Australia.  
Neil is a world renowned Woodturner having  
demonstrated around the World

To Do List:

1. Make a note in your Diary
2. Register as soon as possible, forms will be sent out at the end of July
3. Book your accommodation if required:

Also not to be missed:

Bill Owen: "Woodturning Supplies Ltd" for all you need for your Woodturning & More.

For the Partners: TBA

Good Food, Good Company & Good Fun.

Contact Eleanor Ainger: [eainger@gmail.com](mailto:eainger@gmail.com) or P: 0211464315



# WAITAKI WOODTURNERS GUILD

## SPIN AROUND

27th -29th Oct 2017

We are pleased to welcome Neil Turner  
as our guest turner



Neil describes himself as, "not a very technical turner...

for me, how I arrive at the finished item is irrelevant as long as it's what I set out to achieve."

He uses a 20mm bowl gouge for most bowl

turning, and if scraping or shear scraping will get the job done,

then that's what he'll do!

His main production pieces are natural edge bowls from burls and stumps, occasionally with some subtle embellishment. Furthermore, artistic sculptural pieces inspired by Neil's environment using fire, wind and to a lesser extent water are now something of a signature style.



**Christchurch Woodturners Association**

**P O Box 79187 Avonhead**

**Christchurch 8446.**

**Our internet Banking Account Number is 031705 0048498 00**

**If you haven't paid your subscription yet you can pay by Direct Credit, post it to our PO Box or bring it with you to the next meeting.**

**It is with great sadness that we announce the passing of Mel Orange and Keith Gardiner. Keith was a Foundation Member of our Association. Our thoughts and prayers are with their family and friends.**

**2016/17 Contact Details**

Patron: Soren Berger, 25 Rodney St, New Brighton; 388 1004.

Life Member: Bruce Irvine, 401 Withells Rd, Avonhead; 358 8482

**Committee:**

President: Rick Bolch: 28 Waiau St, Hoon Hay; 980 5156.

Treasurer: Bill Parsons, 76 Fendalton Rd, Fendalton; 351 5647.

Secretary: Ray Morgan: 154b Brookside Rd, Rolleston; 366 9795.

Newsletter: Joe Hayes, 130 Petrie St, Richmond; 385 3910.

Web Master: Ray Hall, 10 Halsey Street, South New Brighton.

Peter Clemett: 36a Fenhall St, Russley; 342 5242.

Michele Fitzgerald 021 295 8463

Noel Graham: 63 Oakley Cres, Hornby; 349 8976.

Murray Hemmingsen, 75 Woodbury St, Russley, 342 5486.

Celia Irvine: 401 Withells Rd, Avonhead; 358 8482.

Rex Marshall: 396 Greers Rd, Bishopdale; 352 9297.

Arnold Memelink: 65 Francis Ave Mairehau: 385 3733.

Mike Wing: 7 Donovan Pl, Halswell; 741 1475.