



Splinters

Newsletter of the Christchurch
Woodturners' Association Inc.

www.woodturning.nz



**Peter presents the “Beads of Courage” Boxes to (from left to right)
Ady Drummond (Family Support Coordinator),
Kayelene Lucas (Christchurch “Family Place” Administrator) and
Marie Purcell (National Family Support Manager)
from the Child Cancer Foundation.**

**Page 2
Upcoming Events**

**Page 3 & 4
Ashburton Fun Day**

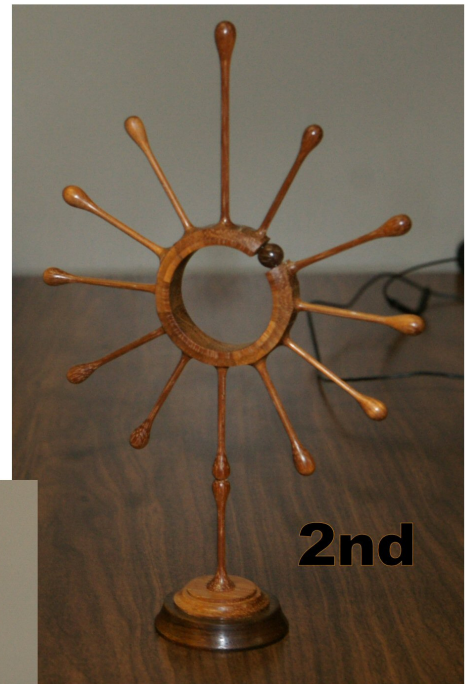
**Page 11
Books at the Library**

Upcoming Events

- May 28th** **St Albans Menz Shed Openday** Saturday 10am to 3pm
36 Nancy Ave. Woodturning at St Albans Menz Shed ~ Every Tuesday
1pm to 4pm ~ See Rex for details
- June 4th
& 5th** **Hari Hari Weekend**
Colour and texture. See Noel to enroll
- June 7th** **Club Meeting** Tuesday at 7:00pm
The HARVARD Community Lounge Corsair Drive Wigram
Lattice Bowls with Rick Bolch
- June 9th** **Pyrography Group** Thursday 7pm to 8:30pm at Cobham
Trees, bushes, grasses and other vegetation
- June 16th** **Hands On at Cobham** Thursday 7pm
We will be having a look at the Infinity Chuck from Teknatool, having a play
with the quick-change jaws and looking at how we can retrofit our old jaws
to the new chuck.
- June 26th** Robert Sorby Demonstration in Ashburton see page 10 for details
- July 5th** **Club Meeting** Tuesday at 7:00pm
The HARVARD Community Lounge Corsair Drive Wigram
Demonstration and Topic to be announced at the June meeting
- July 14th** **Pyrography Group** Thursday 7pm to 8:30pm at Cobham
Mountains, Hills and Valleys
- July 21st** **Hands On at Cobham** Thursday 7pm (Might be bandsaw boxes ???)
- Sept 2nd
3rd & 4th** **20th Anniversary Celebration**
Official Opening Friday 2nd at the Harvard Lounge
Hands-on Workshop Saturday 8am to 4pm, Cashmere Club Gymnasium
Formal Anniversary Dinner Saturday 6pm to Late, Cashmere Club
This will include Graduation and The Peter Hutchison Trophy
Informal Wrap-up Sunday afternoon Drinks and Nibbles **TBC**
- Sept 29th
To
Oct 2nd** **Woodturning New Zealand International Symposium**
Kings College, Otahuhu, Auckland
See Page 11 for details



South Island Fun Day at Ashburton Saturday 21st May



Winner of the Display Table Competition ~ Ashburton

Winner of the Tina Turner Cup and Saucer Woodturning Competition ~ Timaru

Winner of the Turn a Secret Object Competition (a thin plate) ~ Timaru

Best pieces on the Display Tables:

- 1st Ian Harding ~ Ashburton
- 2nd Peter Clemett ~ Christchurch
- 3rd Ken Newbitt ~ Timaru

April Demonstration “The Spindle Gouge” with Bruce Irvine

Bruce showed us his reground spindle gouge with its long taper, compared to a new chisel with a much sharper angle under the cutting edge. He mounted a square section piece of wood about 120 mm long and turned it down to about 35mm dia. Then marked off three lengths with a parting tool cut and proceeded to free hand cut a ball on the end section, before drilling a short hole in it and parting off the ball. The second and third sections were then made into balls in a similar fashion.

Another chuck was then put on with a jam chuck already held in it, which was used to drill out the remainder of the hole and to turn off the parting tool marks from the end of the ball. They had a quick sand down to 150 grade paper, ending the demo. Bruce showed us various pieces all turned down with his spindle gouge..

Rick Bolch (scribe)





April Table 1st Robin Blowers ~ 2nd Ray Morgan ~ 3rd Rex Marshel

May Demonstration

USING THE SKEW CHISEL with REX MARSHALL

Rex began by showing us how to set up a grinder and hollow grind a skew chisel, as sharpness is vital with a skew... Then, using a jacobs chuck in the headstock, he held a 150mm. length of 20mm square kauri wood in the chuck and a centre in the tailstock. This was turned to round using the skew and then leaving about 30mm at the end, he turned the remaining length down to about 3mm diameter and tapering down to a point at the end. The large 30mm section not touched. was then shaped to a sphere and a tapered shape. The whole piece was then sanded from 120- 400 grit, the thin taper completed to a point and the pin then parted off at the headstock, completing his 'shawl pin'.

A piece of mahogany was done in a similar fashion, and Rex said that he would take it home and blacken it in a mixture of vinegar and steel wool.. Thus completing two shawl pins all turned with two skew chisels.

Rick (scribe)





May Table 1st Peter Clemett ~ 2nd Rex Marshel ~ 3rd Peter White

PRESIDENT'S PIECE – JUNE 2016

Hi Everybody,

As I write this, coming to the close of my third year in office, I am reflecting that it will be my final President's Piece. Our Constitution allows for a normal, maximum Presidential term of two years, with extension possible only in extraordinary circumstances. It is time now for me to step aside and allow another to take up the reigns and stamp their mark on Club affairs. I hope anyone contemplating service at this level will make this known and put their hat in the ring at or before our upcoming AGM. One thing's for sure – if voted in you will have the very capable backing of an experienced Committee to keep things running smoothly.

My sincere thanks to everyone for all your encouragement, feedback and support during my term. The strength of this Club is most certainly in its members and their willingness to contribute in whatever manner they are able, for the benefit of all. That not only makes for a healthy and supportive Club environment, but ensures the behind the scenes work also flows smoothly.

I am extremely proud and privileged to have represented the Club in this capacity, both in our own Club affairs and across the wider woodturning community nationally and overseas. It is always a pleasure to meet and interact with other like-minded people, and I have found myself actively seeking out opportunities to do so whenever I travel. Wherever they are from and whatever their situation, there is the common bond we share through our craft which just seems to break down any barriers. Wearing the mantle of President I initially felt a sense of duty to reach out, but I know now that it's something I will continue to do, regardless of my role.

But it's not just interacting with fellow "woodies" that I find rewarding. There have been some truly memorable moments arising out of engagement with members of the general public and recipients of our Club's charitable works.

Those who were at our May club meeting will know that I had hoped to be able to welcome guests from the Child Cancer Foundation (CCF) and finally hand over our donation of Beads of Courage boxes. Unfortunately, other events took control that evening and our guests were unable to attend. However, in the following week I was able to arrange a time to meet with CCF staff and volunteers in their city offices, and made the formal presentation on behalf of our Club.

Joe Hayes and I met with Marie Purcell (National Manager Member Services), Ady Drummond (Family Support Coordinator – Christchurch), and

Kaylene Lucas (Family Place Administrator - South Island). We laid out all of the boxes for the handover and they received a hugely positive response from the ladies. As I had discovered when I originally contacted the International Beads of Courage coordinator in the USA, our Club is the first to have donated in New Zealand, and it's fair to say until the CCF staff saw our offering they had no idea what to expect. They were truly amazed and delighted by the array of pieces we presented – finding the creativity, variety of forms, timbers, and decorations just astounding. They were somewhat taken aback that anyone would put the obvious amount of time and care into pieces just to give them away and were hugely grateful to receive the donation. Ady told us she was already matching up boxes to recipients in her mind and I expect the first have already been distributed by now.

Speaking personally, I will continue to support this worthy cause, and I hope others in the Club will too. I was given several packs of the special branded beads for incorporation into the boxes, so let me know if you'd like some more – free this time.

Happy Turning everyone,

Peter

Robert Sorby and Carbatec Free Demonstration

Saturday 25th June 1pm to 4pm at Ashburton Woodturners Inc

Plains Village, Maronan Road, Tinwald

RSVP Merv Peck 03 308 7970 pekav@xtra.co.nz

Woodwork books available in Christchurch City Libraries 2015

The New Bandsaw Box Book *David Picciuto. 2015*

Another book on using your bandsaw to make interesting containers. If you haven't come across one like before, then this will give the instructions on how to go about it. The designs are really up to you, but this book has a collection that you could copy if you fancied the retro look.

Great Big Toy Trucks *Les Neufeld. 2015*

Nine toy projects with full instructions, but the vehicles are rather American. They range from a school bus up to a mining dump truck, eight-wheeled crane and articulated low-loader right down to a bobcat skid-steer loader. Plenty of clear photographs accompany the clear illustrations and instructions. Measurements are imperial.



Andi Wolfe, Ohio, USA
www.andiwolfe.com



Chris Pytlík,
Utah, USA



Brendan Stemp
Horsham, VIC

WOODTURNING NEW ZEALAND INTERNATIONAL SYMPOSIUM

29 September to 2 October 2016 at
Kings College, Otahuhu, Auckland

More on www.sawg.org.nz/symposium



Guilio Marcolongo
Wonthaggi, VIC



Troy Grimwood, Taupo
www.3artgallery.co.nz/troygrimwoodgallery.html



John Beaver, California
www.johnbeaver.net



Hugh Mill,
Lower Hutt



Chris Hooton, Taupo
www.3artgallery.co.nz/chrisshootongallery.html



John Wessels, Sedgefield,
South Africa



Curt Theobald
Wyoming, USA
www.curttheobald.com



Karen Miller
Yakima, WA, USA
www.patandkarenmiller.com



Steven Kennard,
Nova Scotia
www.stevenkennard.com



John Van Der Kolk
Coffs Harbour, NSW
www.vanderkolk.com.au



Pat Miller
Yakima, WA, USA
www.patandkarenmiller.com

There will be trade stalls selling all the woodturning tools you need, an instant gallery, competitions, raffles, evening entertainment, and endless tea and coffee.

More information: South Auckland Woodturners Guild website www.sawg.org.nz/symposium
or contact Dick Veitch, 09 298 5775 or email events@sawg.org.nz

Christchurch Woodturners Association

P O Box 79187 Avonhead

Christchurch 8446.

Our internet Banking Account Number is 031705 0048498 00

If you haven't paid your subscription yet you can pay by Direct Credit, post it to our PO Box or bring it with you to the next meeting.

It is with great sadness that we announce the passing of **Neil Scobie** who died on May 3 after losing his battle with cancer. Neil was only 63. Our thoughts are with his family and friends. He was a renowned and well loved woodworker, teacher, author and demonstrator, and will be much missed. Many of us will remember him as the demonstrator at "Spin Around Waitaki" several years ago.



2014/15 Committee Contact Details

Patron: Soren Berger, 25 Rodney St, New Brighton; 388 1004.

President: Peter Clemett: 36a Fenhall St, Russley; 342 5242.

Vice President: Rick Bolch: 28 Waiau St, Hoon Hay; 980 5156.

Treasurer: Bill Parsons, 76 Fendalton Rd, Fendalton; 351 5647.

Secretary: Ray Morgan: 154b Brookside Rd, Rolleston; 366 9795.

Newsletter: Joe Hayes, 130 Petrie St, Richmond; 385 3910.

Web Master: Ray Hall, 10 Halsey Street, South New Brighton.

Noel Graham: 63 Oakley Cres, Hornby; 349 8976.

Murray Hemmingsen, 75 Woodbury St, Russley, 342 5486.

Bruce Irvine, 401 Withells Rd, Avonhead; 358 8482.

Celia Irvine: 401 Withells Rd, Avonhead; 358 8482.

Pat Jordan, 39 McBeath Ave, Hoon Hay; 942 4279.

Rex Marshall: 396 Greers Rd, Bishopdale; 352 9297.

Arnold Memelink: 65 Francis Ave Mairehau: 385 3733.

John Scott: 26 Carston St, Leeston; 324 8340.

Mike Wing: 7 Donovan Pl, Halswell; 741 1475.