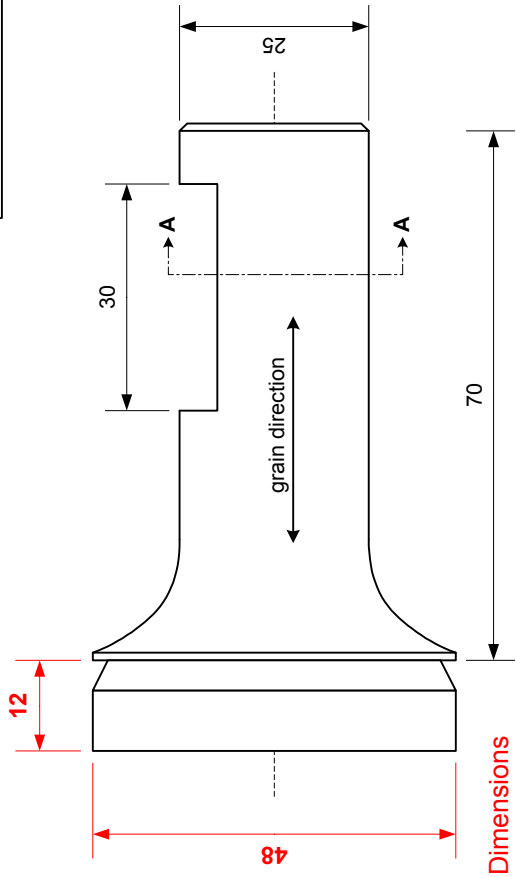
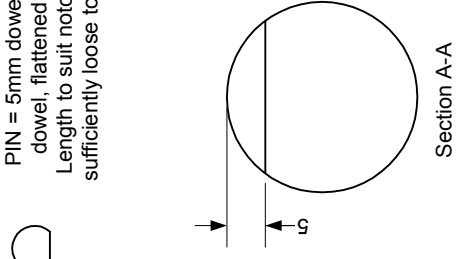


PIN CHUCK
 Drawn by: Peter Clemett
 Christchurch Woodturners Association

PIN = 5mm dowel, or use 6mm
 dowel, flattened on one side.
 Length to suit notch, but must be
 sufficiently loose to move and lock



Dimensions
 shown in red are
 to suit Teknatool
 50mm jaws



How the chuck works - locking action of pin

