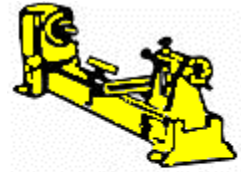


**Christchurch
Woodturners
Association Inc.**

Splinters

Newsletter of the Christchurch
Woodturners' Association Inc.

www.woodturning.org.nz



**Christchurch
Woodturners
Association Inc.**



Pyrography examples from Peter's Demonstration at the September meeting

**Page 2
Upcoming Events**

**Page 5
Milk Paint**

**Page 12
Jim Dunford Trophy**

Upcoming Events

- Oct 6th** **Club Night** Tuesday 7:30pm
Peter will be detailing the Jim Dunford Trophy Competition. This year we will be making. "Beads of Courage" lidded boxes.(see page 12)
Keith Hake will be demonstrating a useful gadget that we all should see.
- Oct 15th** **Hands On at Cobham** Thursday 7pm
Grinding... Oil Stones and Water Stones ~ what's the difference and how do we use them. Wet grinding turning tools with the stone rotating away from the edge ~ the advantages and disadvantages. Correct technique for sharpening the Soren Berger hollowing tool. How to get a good burr on your chatter tools. If you have any sharpening problems bring them along.
- Oct 30th to Nov 1st** **Spin Around Waitaki**
- Spin Around is held in Waitaki Guild Club Rooms,Oamaru Race coarse SH1 just Nth of township. Guest demonstrator is Ken Wraight from Australia, Ken has demonstrated around the World & has won the top Australian award a number of times for his fine Woodwork. For more information contact Ken Newton, 034387741 e-mail knpnewton@xtra.co.nz
- Nov 3rd** **Club Night** Tuesday 7:30pm
The HARVARD Community Lounge Corsair Drive Wigram
Soren's demonstration will be "Turning flowers from wet wood"
- Nov 19th** **Hands on at Cobham** Thursday 7pm
Stumps to Bowl Blanks... A look at the theory and practice of taking stumps and logs, deciding on the best utilization of the timber, chainsawing it up then cutting it into bowl blanks on the band saw.
- Dec 1st** **Christmas Function...** Tuesday 7:30pm
The HARVARD Community Lounge Corsair Drive Wigram
Games and competitions. Turning demonstrations with a Christmas theme. Bring your family and friends and a plate with finger food.

August demonstration TEXTURING and COLOURING

With NOEL GRAHAM

Noel said that if you take up texturing or colouring, you should practice for hours to see all of the effects that are possible with the tools. You can buy cheap texturing tools , which can limit your options or invest in a Sorby or Crown texturing and spiralling system.

In the chuck, Noel set up a bowl with a wide rim sanded to 1000 grit and with a speed of about 1500 rpm, ran a texturing tool across the rim several times between two pencil lines, before turning off the inner and outer section of the rim. To highlight texture, colour can be used and Noel again stressed that you should continually practice various holding and paint spraying methods. He showed us his airbrush equipment with several brushes set up for different colours. Noel then slowly rotated the bowl in the chuck by hand and sprayed across the front of the rim. Then rubbed on a limeing wax with a rag, and then rubbed the wax off , leaving the remaining wax high lighting the pattern of the texturing.

After mounting a large platter in the chuck, Noel masked off a previously textured wide rim, then textured about the centre 50mm. of the platter before spraying the hollowed out section of the bowl with a yellow paint, using his air brush. Then using an air brush set up with red paint, he sprayed the outer areas of the hollow slowly blending into the yellow. The masking tape was removed and the contrasting blue rim was revealed. Noel set up another small bowl and showed us another limeing effect on texture.

Another small bowl was set up and Noel demonstrated another texturing technique using a small free wheeling cutting tool in a Dremal tool, which finished off the demonstration. Another well prepared demo by Noel.

Rick (scribe)



October November 2015



August Competition Table

Milk Paint

At the recent Nick Agar demonstrations, Nick was using “milk paint” to create some interesting ceramic effects. He suggested that if we wanted to have an experiment with Milk Paint we should contact a local supplier, Jim Robbie. Jim stocks the “Old fashioned Milk Paint” range. Their website is at <http://www.milkpaint.com/>. Jim has most of the colours in stock. They are \$27 per pint packet plus P and P. They come in a powder form. You can order by phone or email, 03 448 6260, 027 236 9957 or jim.robby@xtra.co.nz. You can pay by direct payment. Jim uses Briwax shellac sanding sealer after sanding the paint and waxes with Briwax clear wax. If the piece needs to be heat or water proof then he uses Briwax Teak oil. Some of his work can be seen on the Central Otago Arts Trust website.



Chemically safe Historic Paints since 1974



Robert Sorby Demonstration Sunday 19th July at Rangoria with Chris Pouncy

ProEdge Sharpening system:

The ProEdge sharpening system uses a sharpening belt rather than a wheel. There is a flat backing plate behind the section of belt where you are sharpening your tools so the tools get a flat grind rather than the hollow grind that you get when using a grinding wheel.

There are a range of tool rests and holders for sharpening all the common woodturning tools. In Chris's opinion the major advantage of the ProEdge system over other sharpening systems is the repeatability of the grind. The more accurately you can setup your system the less metal you remove each time you grind.

Available from Bill Owen and Carba Tec for \$899



Wobble Chuck:

Chris demonstrated a new Wobble Chuck from Sorby. It can be used either with a screw or faceplate attachment to the wood. He demonstrated both a finial and an offcentre box lid.

Available from Bill Owen and Carba Tec for \$189



Texturing Tools:

Chris also demonstrated the Sorby range of texture and spiral tools on both bowls and box lids.



September Demonstration ~ Pyrography With Peter Clemett

Initially Peter showed the types of transformers that are available. He then went on to discuss handsets and tips

Transformers / Power Packs

To get Nichrome wire hot enough to burn wood you require 5 to 15 amps at 2 to 3 volts. The thicker the wire in the tip the more current (amps) will be required to get the tip up to heat. There are two types of "heat control". Some systems have continuous control using a knob to set any heat you want. Others have three settings which you select by plugging your handset into different connectors ~ low, medium and high. This gives you less control over the exact heat of the tip. Peter demonstrated how you could use a domestic light dimmer to vary the power into a unit that has three set outputs. You can leave the handset plugged into the "high" connector and vary the heat using the dimmer knob. This gives you continuously variable heat on a transformer that usually only has three options. There are two types of domestic light dimmers available. These are referred to as "leading edge and "trailing edge" dimmers. You require a "leading edge" dimmer for this function. Peter had three pyrotechnic systems to show us and had slides of another two systems.

We had a look at:

- The Delta system (\$142) with handset
- The Razertip system (Razertip A \$298) (Razertip B \$389) both with handset
- The Burnmaster system (Hawk \$368 with handset and 10 tips)
(Eagle \$468 with 2 handsets and 10 tips)
- The Jaycar Switchmode Bench Powersupply MP3802 0-16V 25amp
(No handset \$239)

Tips

Peter started by saying that the nichrome wire used on some tips is so thick that they require so much current to get them up to heat that you can burn out smaller transformers. Typically to get 20 gauge nichrome tips up to red hot can require more than 10 to 12 amps and some systems cannot supply this continuously without overheating. Thinner nichrome wire can be used (22 to 24 swg) just as effectively and requires less current. (see the graph on page 8)

Making you own tips.

Peter demonstrated how to make tips by bending up nichrome wire and hammering it out to the shape you need and then filing it sharp if required. The hammering and filing can be done with the tip cold or hot. Nichrome wire is more malleable when hot.



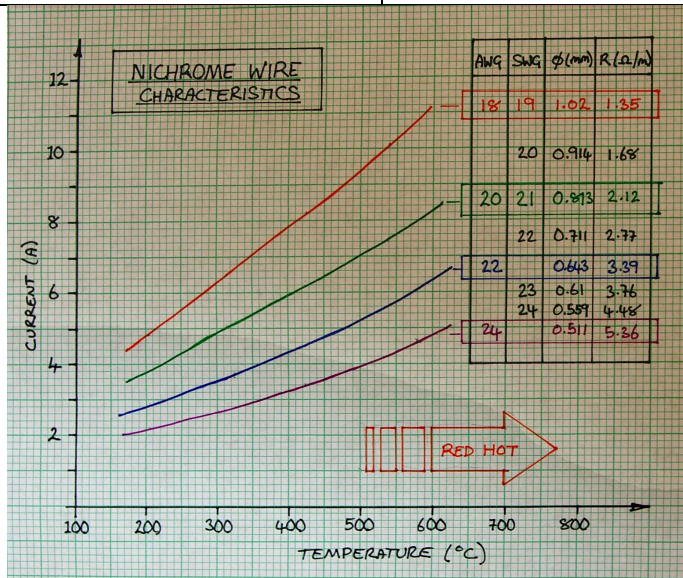
Razertip



Delta



Burnmaster



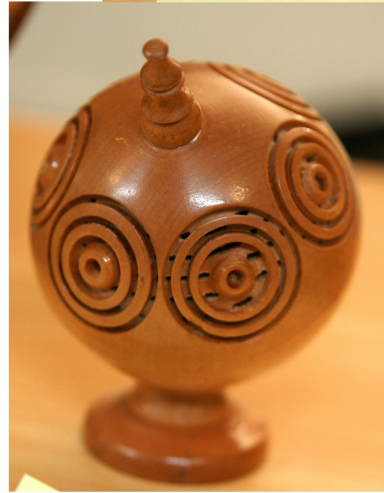
Jaycar MP3802 Switchmode Lab Bench Power Supply



SKEW

WRITER

SHADER



September Competition Table



off the mark by Mark Parisi



President's Page

Spring is well established now and even if the weather of late has not got the message we are rapidly heading towards longer days and more time spent outdoors. Naturally, we are encouraged and inspired by the flourish of new growth around us to consider our own immediate environments and seek to make some positive change for the better. Whether it is confined to the usual spring clean or extends to more significant undertakings, the change we effect gives us a boost on top of the good feelings we derive from the seasonal re-birth.

For myself, spring is inevitably the time I tend to get enthused about outdoor projects, and this year is no exception. Over winter, Julie and I finally consolidated our long contemplated plans for the landscaping of a portion of our section, and made the commitment to start. Whilst we got professional help to help us establish the form and "bones" of our new patio and barbeque area, there's still plenty left for us to do. We have a full programme of work ahead of us, installing decking, painting and staining, soil preparation, and planting. The aim, of course, is to get it sufficiently completed to be able to enjoy our new space over the long summer evenings!

In the workshop I am also keen to make changes for the better, and desire to harness my seasonal enthusiasm to this end. I must admit to having found over the years that my grand vision of final outcomes frequently takes considerably longer to realise than planned, as "life" inevitably intrudes and interrupts the flow. In the process I find some projects never quite get finished beyond the "functional and good enough" point, before something else becomes more important. Somehow the final finishing off never seems to happen to the level intended at the outset.

I have therefore resolved this year that my workshop "spring clean" will include the finishing of at least one of the organisational and storage projects I have on the go. Given that I started these with the objective to make my time at the lathe and in the workshop more enjoyable, I know completion will come with a definite and sustained feel-good factor.

How about you? Is there something you can do to improve your workshop environment? Making even a small change for the better can not only boost the utility and safety of your space, but I'm sure will enhance the ongoing pleasure you gain from your craft. I look forward to hearing about what you have achieved.

Happy Turning everyone,

Peter

It is with great sadness that we announce the passing of **Bill Buckland** who died on Monday 21st September. He was at the first meeting of the Club back in 1996. His wife **Annette** died the week before Bill. Our thoughts are with their family and friends.

The **Jim Dunford Trophy Competition** will be judged at our December Christmas meeting. The competition this year is to make a “Beads of Courage” lidded box. Beads of Courage are given to children who are undergoing extensive medical procedures. They get one bead for each procedure. We will be making boxes for the children to keep their beads. Peter will be discussing the competition and box design at the next meeting (October)

Here are the guidelines:

- In order to sufficiently hold beads, turned boxes need to be no smaller than 150mm in inside diameter and 100mm deep. Larger is okay.
- If possible, engrave or burn “Beads of Courage” on the lid.
- Make sure lids are easily removable.
- Finials or knobs should be easy for a small child to grasp and not too elaborate or pointed.
- Sign your name on the bottom.

2014/15 Committee Contact Details

Patron: Soren Berger, 25 Rodney St, New Brighton; 388 1004.

President: Peter Clemett: 36a Fenhall St, Russley; 342 5242.

Vice President: Rick Bolch: 28 Waiau St, Hoon Hay; 980 5156.

Treasurer: Bill Parsons, 76 Fendalton Rd, Fendalton; 351 5647.

Secretary: Ray Morgan: 154b Brookside Rd, Rolleston; 366 9795.

Newsletter: Joe Hayes, 130 Petrie St, Richmond; 385 3910.

Web Master: Ray Hall, 10 Halsey Street, South New Brighton.

Noel Graham: 63 Oakley Cres, Hornby; 349 8976.

Murray Hemmingsen, 75 Woodbury St, Russley, 342 5486.

Bruce Irvine, 401 Withells Rd, Avonhead; 358 8482.

Celia Irvine: 401 Withells Rd, Avonhead; 358 8482.

Pat Jordan, 39 McBeath Ave, Hoon Hay; 942 4279.

Rex Marshall: 396 Greers Rd, Bishopdale; 352 9297.

Arnold Memelink: 65 Francis Ave Mairehau: 385 3733.

John Scott: 26 Carston St, Leeston; 324 8340.

Mike Wing: 7 Donovan Pl, Halswell; 741 1475.