

**Christchurch
Woodturners
Association Inc.**

Splinters

Newsletter of the Christchurch
Woodturners' Association Inc.

www.woodturning.org.nz



The club meets for demonstrations on the first Thursday of each month at 7pm in DA02 at the College of Education, and for a free hands-on night at Cobham Intermediate every third Thursday of the month, also at 7pm. All are welcome; a \$3 door charge covers costs for the demonstration evenings.

**Page 2... Upcoming
Events**

**Page 3,4,5... South Island
Fun Day**

**Page 12,13...Robert Sorby
Demonstration**

Upcoming Events

- June 5th** **Club Night**
Colour, Peter demonstrating
- June 19th** **Hands On at Cobham**
Turning Yo-Yo's
- June 22nd** **Robert Sorby Demonstration sponsored by Carba-Tec**
At North Canterbury Woodcraft Club 183 Northbrook Road, Rangiora 7400
See Map on Page 12
- July 3rd** **Club Night**
AGM, Peter Hutchinson Trophy, Noel demonstrating
- July 17th** **Hands On at Cobham**
Noel talking about and demonstrating turning Deer Antler Buttons
- July 19th 20th** **Alby Hall Demonstration Weekend. Timaru Woodturners Club**
- Oct 2nd to 5th** **Woodturning New Zealand International Symposium**
At Wesley College, Paerata, just 30 minutes south of Auckland Airport.

Demonstrators include: Phil Irons, Cindy Drozda, David Nittmann, Cythia Gibson, Mike Gibson, Joey Richardson, Ken Wraight, Bruce Wood, Vaughn Richmond, Shane Hewitt, Theo Haralampou, Robbie Graham, Neville and Emma Walker.
- Oct 31st to Nov 2nd** **Spin Around Waitaki**
At Oamaru Racecourse. Demonstrator is Niki Marshall from Nelson. For more information contact Ken Newton Phone: 034387741 or email:
knpnewton@xtra.co.nz

Fun Day ~ Best Individual Piece



1st Ken Newbitt Timaru



2nd Don Morgan Christchurch



3rd Dave Busby Ashburton

Fun Day ~ Best Table



1st Waitaki



Ashburton

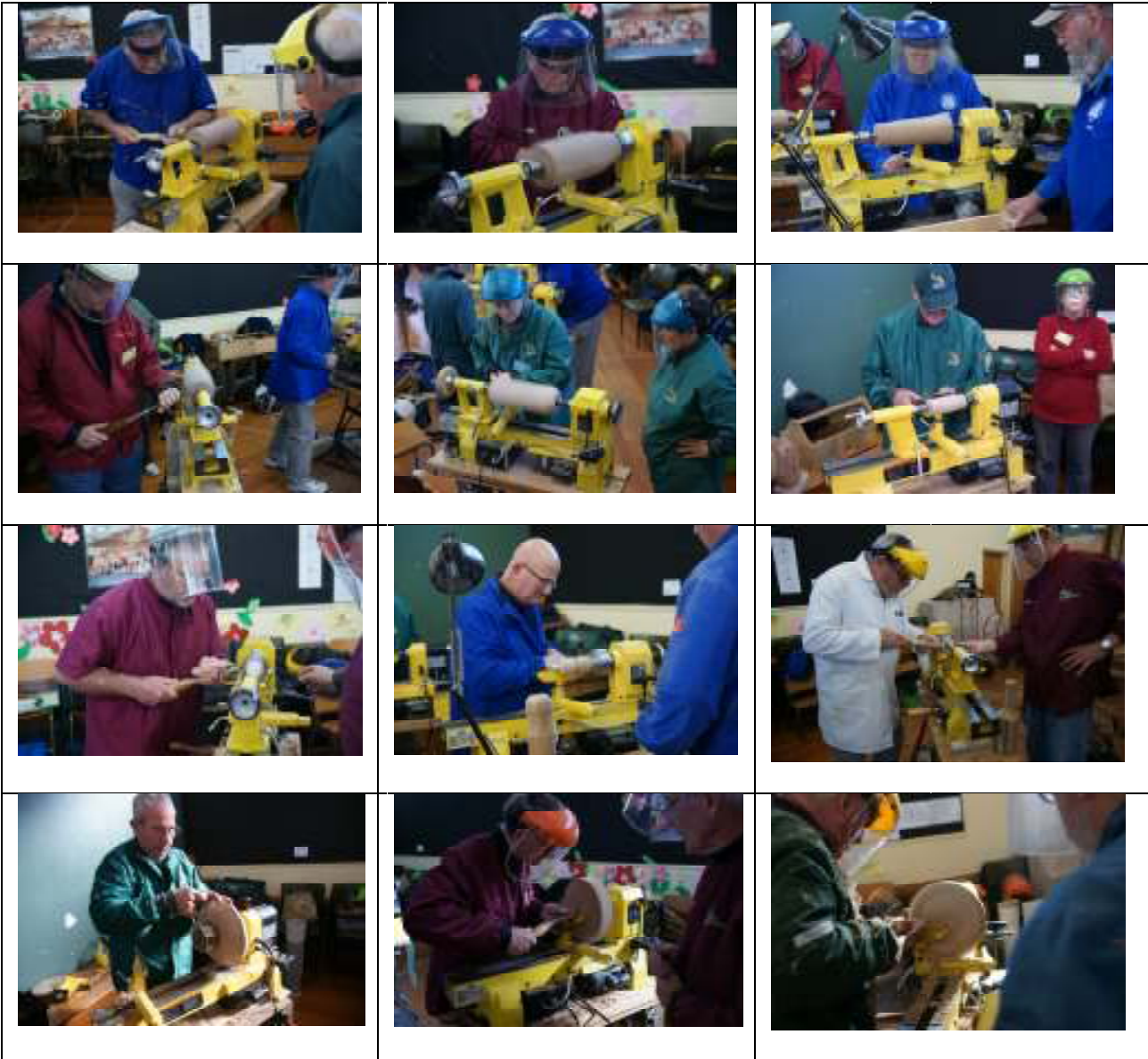


2nd Timaru



3rd Christchurch

Fun Day ~ Team Competition Best Pair of Matching Turnings



1st Prize Ashburton



June /July 2014

Club Night ~ 3rd April Turning a Bottle, Stopper and Plate ~ Competition Practice

Tonight was a warm up night to show the members what will happen at the Fun Day which our club is hosting in May. Basically the first team of three has to turn a plate, a bottle and a bottle stopper and the second team of three has to copy each of the three items, without measuring equipment. Each person is allowed ten minutes for their task. Because we were only using two lathes, the first two members turned a bottle and a plate. the next two members turned stopper and a plate . The last pair of members turned a stopper and a bottle, copying the original items. Most items were finished on time with good results. With our members now having a better idea of the requirements, we should be able to field two or maybe three teams for our Fun Day.

By Rick Bolch



President's Page

As I write this, I am conscious that the Club year is rapidly drawing to a close and another AGM will soon be upon us. It hardly seems 12 months since you elected me your President, and I hope in that time you feel I have represented the Club and the Office appropriately. If you feel passionate about some aspect of how our club should be run, or even just have skills and time you are willing to dedicate, I would strongly urge you to put your name forward for election this year to the Committee or any of its key roles. Several long-serving members of the Committee will be looking to step down from their positions, and we'll need others to step up. Also, we can only continue to thrive as a Club and move with the times when influenced by fresh perspectives. Please give your participation in this essential function of our Club your serious consideration.

I hope you managed to get along to the Interclub Fun Day hosted by our Club at the start of May. From my perspective it was a fantastic and successful day. The spacious venue, perfect weather, efficient organisation, and plenty of enthusiastic volunteer help all contributed to ensure the event ran smoothly. Sure, there is a competitive element to these Fun Day events, but really they are all about getting involved and sharing in the passion for what we do. It was marvelous therefore to have the participation of the Ashburton Club for the first time in a long while. That they also walked away with the Tina Turner trophy for best matching pieces in the team turning event was a huge thrill for them and a great result – perfect encouragement to take part again next year.

Bill Owen's attendance with his shop was a bonus for many and it was certainly well patronised during the day. We are very fortunate that Bill and Elsie were able to be with us. I'd like to pass on Bill's thanks to all those who helped him with his setup and take-down, and add to that my thanks to everyone else who contributed to the day's success: participating Clubs from around the South Island; our organising committee; donors of raffle prizes and delicious food; and the many members and friends who offered their time and energies in preparation and on the day. Thanks also to the NAW for their generous sponsorship of prize money, and their representative and our guest judge Geoff Addison for making the trip South.

On a number of occasions at recent Club meetings I have mentioned the new Club competition which is being established specifically for work which is coloured or embellished in some way. Elsewhere in this newsletter you should be able to find the rules for the Peter Hutchinson Memorial Trophy competition, and these will also find their way onto our website. Whilst it's true that there is huge scope for diversity in the "unadorned" forming and finishing of pieces - and for some people that is alone sufficient -to me, colour and embellishment adds many further dimensions for expression and makes our craft/art all the richer for it. I do hope you will be inspired to enter this new competition, and I look forward with anticipation to what will be on display.

Happy Turning everyone,

Peter

Hands On at Cobham

Threads and Spirals (April 17th)

Joe had a look at making a wood carving mallet. The head is a cylinder turned from Black Bean and hollowed out. The handle is made from ash. The head and handle were threaded with an 1 3/4 inch tap and die. The cavity in the centre of the head was filled with lead shot (to give the mallet more weight) and the handle was screwed up on the lead shot to stop it rattling. We found that the more oil we used on the wood when we were cutting it with the tap and die, the cleaner the threads we were getting.

Pat demonstrated the use of a thread chaser. Lathe speed is critical. We were using around 250 RPM. You have to manually move the chaser that is cutting the thread. Initially you just tickle the chaser over the spindle to create a very shallow thread and slowly make the thread deeper and deeper with each pass. It is quite easy to move the chaser at the wrong speed and mess up the thread you have already started to create.

We also had a look at the use of the Sorby and Crown Spiraling tools for creating spiral embellishments on spindle work.

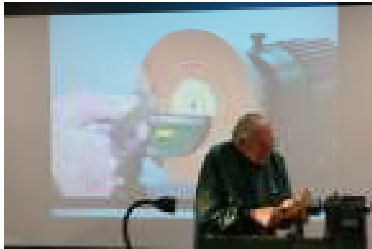
Mushrooms and Toadstools (May 15th)

Members brought along examples of mushrooms and toadstools that they had turned for us all to have a look at. We had a talk about using CA glue on bark on the outside of natural edge mushrooms to keep the bark in place. Joe had a experiment with different techniques of marbling red/orange toadstools with small white dots. He eventually decided that the white dots were not defined enough and the marbling covered up the grain too much. The latest theory is to stain the toadstool tops red/orange and use whiteout (twink) or white model aircraft paint to make the small white dots. The stain will allow the grain to stand out through the colour



Club Night “Turning Picture Frames” with Bruce ~ 1st May

Tonight, Bruce Irvine gave us a demo. on turning Picture Frames. Bruce had prepared a blank about 180mm diameter with a chuck holding recess on each side. He marked a line at 30mm in from the outside diameter and cut a recess out approx. 4mm deep. The blank was then repositioned in the chuck being held on the opposite side, and the outside diameter was trimmed. Again Bruce measured in from the outside edge, marked a line and proceeded to part off the outside frame from the inside piece being held in the chuck. All this was removed and another blank was held in the chuck. The outside diameter was turned down too be a jam fit for the frame. The first blank was too loose a fit, so Bruce did another one and finished up with a good jam fit on blank. He was then able to decorate the front of the frame as required, thus ending the demonstration. By Rick Bolch



June /July 2014

Alby Hall Demonstration Weekend Timaru Woodturners

July 19th and 20th Phar Lap Raceway Timaru ~ entry from Pleasant Point Highway
Saturday Demonstration \$40 Sunday Practical \$40 Contact Adriaan Sloten
aslooten@orcon.net.nz phone 03 686-2540 or 021 267-3480



Alby Hall has been working at the Ancient Kauri Kingdom since 1995, developing techniques and processes to successfully work the Ancient Kauri (the world's oldest workable timber). His work is sent all over the world.

Alby was born in Bundaberg, Queensland, Australia in July 1948. After travelling extensively throughout Australia, he settled in Tasmania, where he was a fisherman for 16 years.

In 1978 he attained his Bachelor of Fine Arts degree in Hobart. He resumed fishing, skippering on crayfish, scallop and deep sea hook fishing boats until 1985, when he moved to New Zealand with his New Zealand-born wife and their two daughters.

In 1986 Alby started woodworking, making tables at first.

In 1990 woodturning became his main creative outlet. He took to it with a passion, developing many new processes and tools to be able to achieve the ideas and designs that came from his creative process.

He has exhibited widely in New Zealand and has won numerous awards in major competitions and his work appears in the prestigious 'Bohlen Collection' of woodturning in the United States, a collection hand-picked from all around the world.

Alby's craft is mainly woodturning, with an inlay content such as fish, birds, seascapes, land images and sunrays, producing a layered depth using clear and opaque resins. The art content of his work are statements relating to the need to be concerned about the human destruction of our planet. The mental images of his pieces are inspired by his life experiences as a fisherman in Tasmania, a period he regards as his most inspirational. He is greatly interested in plants and life itself.

Alby's craft is his lifeblood. The ability to pass on his skills and to inspire others in their work is very important to him. While his subconscious continues to bud off ideas and finished designs and his logic produces the ability to develop the processes and skills to make these objects, his innate creativity has not been destroyed. He is greatly pleased to have the opportunity to develop and perfect this wonderful process of creative inspiration.

The demo on the 19 July, will consist of, Developing an idea for a 3 piece hollow-form , designing that idea ,then make it. I will bring some wood for this piece; some good burl wood will do it. The finished piece , I will donate to the club, to be raffled for club funds. I don't mind how many people are at this demonstration.

On the 20 July, a workshop for up to 30 turners will be good. I would like to lead the turners to make a multi piece seed pod, If you can make a natural edge bowl, it is possible to make a multi piece seed pod.

Cost: Saturday 19 July demonstration \$40.00 this includes lunch as well as morning and afternoon tea.

Cost: Sunday 20 July workshop \$40.00 this includes lunch as well as morning and afternoon tea.

Saturday Night a Mid Winter dinner is available at the Grey Way Lounge, opposite the Timaru Woodturner club for \$32.00 per person.

All day Saturday will also be the largest wood turners tool sale in the South Island. Lots of tools available for sale including 3 lathes. Please contact Ethan Downey (ethan.downey@gmail.com) or 03 688 7675 if you have items for sale, a 10% fee to Timaru Woodturners Club applies.

Saturday 19th July Alby will do a demonstration taking us from inspiration of a piece to actual completion.

Sunday the 20th July will be a workshop where Alby will guide us through completing a multi piece seed pod.

In Alby's words if you can make a natural edge bowl, it is possible to make a multi piece seed pod.

“Timber we turn” ~ Crossword Answers

Across

- 1 Sycamore
- 7 Kahikatea
- 8 Rimu
- 9 Ash
- 12 Yew
- 14 Miro
- 15 Kowhai
- 16 Elm
- 17 Cypress
- 20 Totara
- 21 Plane

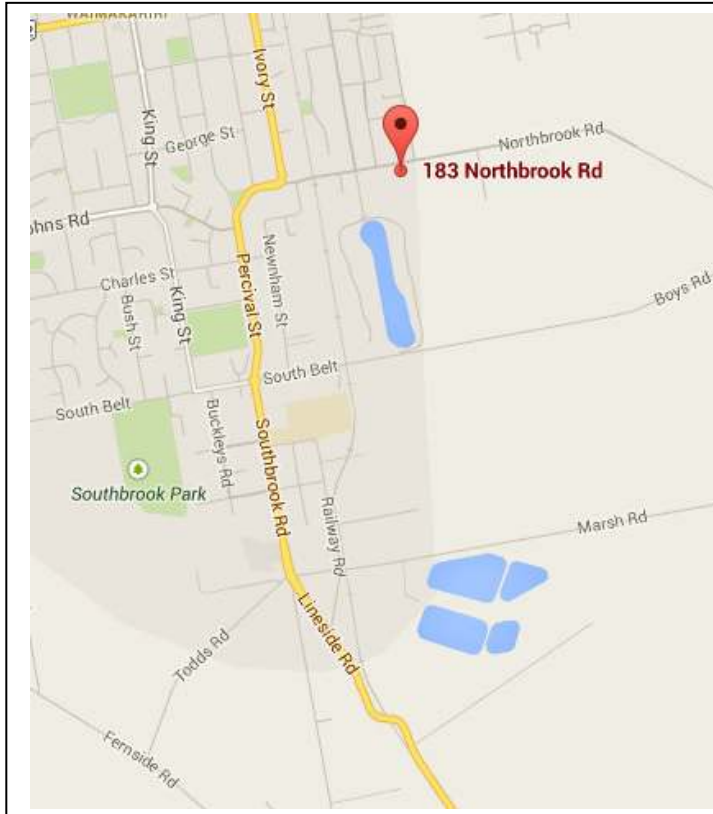
Down

- 2 Cherry
- 3 Teak
- 4 Chestnut
- 5 Laburnum
- 6 Matai
- 10 Holly
- 11 Oak
- 13 Walnut
- 15 Kauri
- 18 Silk
- 19 Maple

Robert Sorby Demonstration sponsored by Carba-Tec

Sunday June 22nd

At North Canterbury Woodcraft Club 183 Northbrook Road, Rangiora 7400



Travel north on the Northern Motorway. Second Left Turnoff after the Waimak Bridge onto Lineside Road. Lineside Road becomes Southbrook Road. Southbrook Road becomes Percival Street. After the 90 degree right hand bend, Percival Street becomes Northbrook Road. 183 Northbrook Rd is on the right, five blocks after Percival Street becomes Northbrook Road. There is off street parking.

Call or email Norm Wood ncwoodcraft@ymail.com 03 313 8133 or 027 295 2116 to reserve a place.

Bill Owen will be attending this demonstration and will have Robert Sorby tools available for purchase.



Robert Sorby Woodturning **DEMONSTRATIONS**

FREE TO ATTEND

Sponsored by

CARBA-TEC
TOOLS FOR WOOD

Fresh from demonstrating at the AAW Woodturning Symposium in Phoenix we are pleased to have Chris Pouncy back on tour in NZ and Australia. Chris will be demonstrating a selection of Robert Sorby woodturning tools with an emphasis on some of their famous texturing, spiraling and other embellishing products. Don't miss this opportunity to learn some great new tips and pick up some new tools!

Demo Schedule:

When: Sunday 22nd June

Where: North Canterbury Woodcraft Club

Northbrook Studios, Northbrook Road, Rangiora

Time: 1pm to 4pm

Contact: Norm Wood

Email: ncwoodcraft@ymail.com

Phone: 03 313 8133 M: 027 295 2116

Limited Spaces Available!

Call or email Norm Wood to reserve a spot.

**HURRY!
DON'T MISS
OUT!**

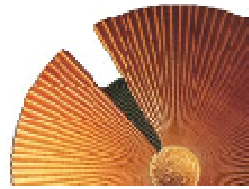
**OUR RANGE OF
ROBERT SORBY
TOOLS WILL BE
AVAILABLE FROM
BILL OWEN
FOR PURCHASE**

www.carbatec.co.nz

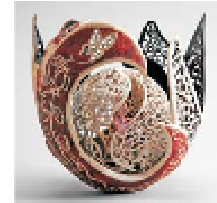
June /July 2014



Cindy Drozda
Colorado, USA
www.cindydrozdc.com



Vaughn Richmond
Perth, WA



Joey Richardson, Lincolnshire, UK
www.joeyrichardson.com

WOODTURNING NEW ZEALAND INTERNATIONAL SYMPOSIUM

2 to 5 October 2014 at Wesley College, Paerata

More on www.sawg.org.nz



Theo Haralampou
Brisbane, QLD
www.woodturner.com.au



Phil Irons
Warwickshire, UK
www.philiron.com



Mike Gibson, Georgia, USA
www.michaelandcynthiagibson.com



Shane Hewitt, Whangarei
www.kauriart.com



Bruce Wood, Auckland



Kobbie Graham, Taupo
www.wildwoodgallery.co.nz



Neville and Emma Walker
Kerikeri
www.kaurigifts.co.nz



Cynthia Gibson, Georgia, USA
www.michaelandcynthiagibson.com



Richard Raffan, Canberra, ACT
www.richardraffan.com



David Nittmann
Colorado, USA
www.dawdnittmann.com



Ken Wright, Melbourne VIC

There will be trade stalls selling all the woodturning tools you need, an instant gallery, competitions, raffles, evening entertainment, and endless tea and coffee.

For further information go to South Auckland Woodturners Guild website www.sawg.org.nz

Peter Hutchinson Trophy

A Trophy in Peter's name is to be awarded annually to the member who displays the best coloured and/or embellished work at an occasion designated for the purpose by the Committee.



General Rules of Competition

Entrants must be financial members of the Christchurch Woodturner's Association at the time of the competition.

Only one entry allowed per member. Work must be the member's own.

A "work" may be either a single item, or consist of multiple, related parts.

At least some aspect of the work must have been turned on the lathe.

The scope of Colouring and/or Embellishing includes, but is not necessarily limited to, one or more of: paint; dye; ink; carving; burning; pyrography; and, incorporation of other materials etc.

Each year the Committee shall determine the date of the event, any special rules or conditions for that year, and appoint a judge or judging panel. These details are to be advised to members via the Club newsletter

Event Details and Special Rules for 2014 Competition

Date of Competition = Clubnight/AGM, Thursday 3rd July.

Special Rules/Entry Criteria = Work of in any medium, and of any vintage is eligible.

Judge = Our club patron, Soren Berger.

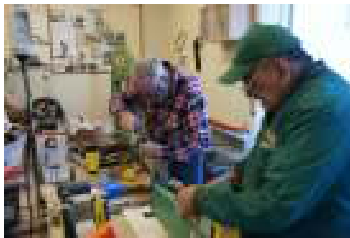


Fun Day Catering Team

Special thanks to Celia and all the team for all the morning and afternoon teas and lunches

Woodturning at the Men's Shed

Don't forget, Woodturning at the Aldred Men's Shed every Tuesday afternoon, Corner of Nancy Ave and Knowles St. Gold coin for entry



Vacuum Pump

Don Reeves has a Vacuum Pump that is surplus to requirements. If you are interested you can contact Don

AGM

Our AGM will be held at the July meeting on the 3rd July. If you would like to make nominations for any of the positions – please get your nomination forms into Bruce. There will be additional nomination forms at the Club meeting on June 5th

Overdue Library Books

There are a large number of overdue Library Books. The Library Book borrowing period is ONE month. Please make sure that any overdue books are returned to the Library at the next monthly meeting ~ June 5th

Membership

There are still 46 people who have not renewed their membership. If you have decided not to renew your membership you need to send a letter of resignation to the Secretary.

2013/14 Committee Contact Details

Patron: Soren Berger, 25 Rodney St, New Brighton; 388 1004.

President: Peter Clemett: 36a Fenhall St, Russley; 342 5242.

Vice President: Rick Bolch: 28 Waiau St, Hoon Hay; 980 5156.

Treasurer: Bill Parsons, 76 Fendalton Rd, Fendalton; 351 5647.

Secretary: Bruce Irvine, 401 Withells Rd, Avonhead; 358 8482.

Newsletter: Joe Hayes, 130 Petrie St, Richmond; 385 3910.

Noel Graham: 63 Oakley Cres, Hornby; 349 8976.

Celia Irvine: 401 Withells Rd, Avonhead; 358 8482.

Pat Jordan, 39 McBeath Ave, Hoon Hay; 942 4279.

Rex Marshall: 396 Greers Rd, Bishopdale; 352 9297.

Ray Morgan: 154b Brookside Rd, Rolleston; 366 9795.

John Scott: 26 Carston St, Leeston; 324 8340.

Mike Wing: 7 Donovan Pl, Halswell; 741 1475.