

**Christchurch
Woodturners
Association Inc.**

Splinters

Newsletter of the Christchurch
Woodturners' Association Inc.

www.woodturning.org.nz



Christchurch Woodturners at Avice Hill Art and Craft Festival

more photos on Page 3

The club meets for demonstrations on the first Thursday of each month at 7pm in DA02 at the College of Education, and for a free hands-on night at Cobham Intermediate every third Thursday of the month, also at 7pm. All are welcome; a \$3 door charge covers costs for the demonstration evenings.

**Page 2... Upcoming
Events**

**Page 4... South Island
Fun Day**

**Page 13... Funniest
Woodturner Competition**

Upcoming Events

- April 3rd Club Night**
Trial Run for the Fun Day competition. Teams of six to turn two bottles, two bottle stops and two trays each. We are looking to identify at least two teams for the Fun Day on May 3rd
- April 4th to 6th Waiora Turn Inn, Otago Woodturners Weekend at Whare Flat, Dunedin**
Contact Leah Jelgersma for registration form ph 03 453-117
email : otagowood@gmail.com \$170 for the whole weekend
- April 17th Hands On at Cobham**
Spiraling tools, Thread Chasers, Taps and Dies for wood. We will be looking at cutting wood threads and at spiraling as an embellishment to spindle work. If anyone has a thread chaser tool set can you bring it along?
- May 1st Club Night**
Picture Frames with Bruce
- May 3rd South Island Fun Day**
Full details on page 4 of this newsletter
- May 15th Hands On at Cobham**
Mushrooms and Toadstools
- Oct 2nd to 5th Woodturning New Zealand International Symposium**
At Wesley College, Paerata, just 30 minutes south of Auckland Airport.

Demonstrators include: Phil Irons, Cindy Drozda, David Nittmann, Cythia Gibson, Mike Gibson, Joey Richardson, Ken Wraight, Bruce Wood, Vaughn Richmond, Shane Hewitt, Theo Haralampou, Robbie Graham, Neville and Emma Walker.
- Oct 31st to Nov 2nd Spin Around Waitaki**

At Oamaru Racecourse. Demonstrator is Niki Marshall from Nelson. For more information contact Ken Newton Phone: 034387741 or email: knnewton@xtra.co.nz



Avice Hill



Art



and

Craft



Festival



2014



South Island “Fun Day” 2014

Hosted by the Christchurch Woodturners Association and sponsored by the National Association of Woodworkers.

You are invited to be present at this annual event being held on Saturday **May 3rd 2014** between 10am and 3pm in the halls of the Upper Riccarton Methodist Church, corner of Brake Street and Yaldhurst Road. Car parking off Brake Street. Halls will be open by 8.30am

We will be putting together two or more teams of six turners to show their lathe skills in the Tina Turner Trophy Competition and we will decorate a table with finished work by Club members.

Bill Owen of “**W.R.Owen Woodturning Supplies**” will be present with samples of his stock.

A Raffle to help defray expenses, morning and afternoon teas, and lunch will be available at a small cost.

There are three competitions: Best Club Table, Best Individual Piece, and the Tina Turner Trophy for the team of turners

Each club will provide ten pieces for their show table. At least 6 of these must be “turned”. Up to four pieces can be none turned items such as carvings, scroll saw or fret work. Only one item per woodworker is allowed.

The show table is an opportunity for a club to show off woodworking skills within their own ranks. It is also an opportunity for individuals to be entered into the “Best Individual Piece” category.

Each club will be given a table measuring 2400 X 600 on which ten items made by club members can be displayed. Dressing the table in a manner that will best enhance the items displayed is the responsibility of each club. Club banners or other identification is encouraged and does not count as one of the ten items. All items displayed, including non turned items, are eligible for judging in the “Best Individual Piece” category.

The Tina Turner Trophy competition for turners on the day is to be a tray, bottle and stopper. Two turners will turn a tray (platter), two a bottle and two the bottle stopper. No rulers, other measuring devices, pencils or sandpaper are permitted. At the completion of the turning competition, the judge will rule on which pairs of trays, bottles and stoppers appear the most similar.

The winning club table will be awarded \$150. Best Individual Pieces will be awarded \$100 for being first, \$75 for second and \$25 for third. The winning Tina Turner Trophy team will be awarded \$150.

We will be looking for people to supply pieces for the Club Table and to compete in the Tina Turner Trophy at the April and May Club Meetings.

Turning Pendants with Pat Jordan

In 2006 2007 Pat spent a year in Sheffield and was a member of the Sheffield Woodturners Club. He met Gerry Marlow there and Gerry showed Pat how he made pendants. On his return to New Zealand, Pat showed the technique in a demonstration in Oamaru and Dick Veitch from the South Auckland Guild was there, liked the techniques and published a project sheet on the South Auckland web site. It is in two places, one shows the jigs required and the other covers the actual process of turning a pendant.



The url of the Jig page is:

<http://www.sawg.org.nz/wordpress/wp-content/uploads/2011/09/Jewellery-Chucks1.pdf>

or go to www.sawg.org.nz, select Tips and Jigs, select Jewellery Chucks

The url of the Pendent page is:

<http://www.sawg.org.nz/wordpress/wp-content/uploads/2011/09/Pendant-Jewellery.pdf>

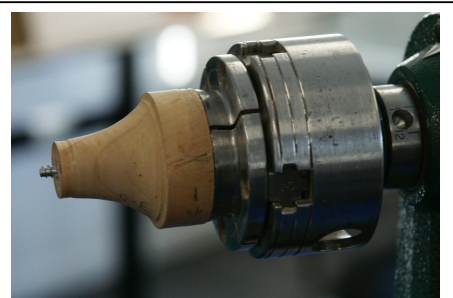
or go to www.sawg.org.nz, select Projects I to M, select Jewellery Pendants

So Pat and a number of other people have been making the pendants since 2007. The hole size in the pendent is controlled by the turner so different pendent shapes can be created by varying the hole size. Gerry Marlow could make a hundred in a day. Pat finds them perfect to take as gifts when he is traveling because of the small size and low weight. Pat showed an example of a pendent made from Speltered Pin Oak. If he makes a number of pendants he does not put the string on them at the time he makes them but puts it on when he gives them away to avoid tangles.

The cord Pat uses is a waxed polyester cord that he gets from Spotlight. The Manufactures name is Threadline. The product code is WP-1. It is a flat and hollow cord.

Two jigs are required to make the pendants, a screw chuck and an offset chuck.

The screw chuck is turned from wood. One end is turned to fit a scroll chuck. The neck of the other end narrows down to 20mm. Pat writes the drill bit size required to drill the hole in the pendent blank on the screw chuck. The chuck he was using at the demonstration required a 3.5mm hole to be drilled in the blank. The face of the screw chuck is turned concave so that if there is any breakout when the blank is screwed onto the chuck it will not cause the blank to spin "off true". A hole is drilled right through the screw chuck to accommodate the actual screw.



Pat cuts the sharp end off the screw to leave about 5mm protruding as a safety measure.

He puts interesting pieces of wood aside for pendants as he finds them like Kamahi (*Weinmannia racemosa*), macadamia, kauri and banksia taking special note of the grain.

Pat uses a bowl or spindle gouge to turn the blank down to round and shape it. He prefers to use a variable speed lathe so that he can turn fast, sand slow and then turn the speed back up to friction polish. The pendent is turned to the diameter of the offset chuck that will be used to hold it as the off center hole is turned. Pat uses a measuring jig of the right size for the offset chuck he is going to use in the second stage of the operation. Both sides of the pendent can be turned to shape as the neck of the screw chuck is only 20mm. The 20mm section at the back of the pendent will become part of the off centre hole so it does not need to be turned or finished.



Front of Pendent before off centre hole



Back of Pendent



Front of Off Centre chuck



Back of Off Centre chuck

The offset chuck is turned from the plastic from a chopping board. This is cut square to size and then turned round on the lathe using the screw chuck. A diameter line is then drawn on both sides of the plastic. This will be used to align both the compression slot and the off centre hole. Pat turns a spigot on the back of the offset chuck as big as he can get in the 50mm jaws. The new "offcentre" for the pendant is now marked 6mm along the diameter line from the true centre.

A 3.5mm hole is drilled in the new "offcentre" and the plastic jig is mounted on the screw chuck in the off centre position. The hole for the partially finished pendant blank is now made with an undercut using a skew so that the blank sits in a "V" groove within the jig. The hole is sized so that it is within 1 to 2 mm of the blanks that are going to be used to make the pendants. The final section of the hole beyond where the blank will go is removed with a parting tool. The next stage is to cut a small segment out of the jig to act as the compression slot. This is done on the bandsaw.

When Pat is turning pendants he does a number of outsides on the screw chuck then changes over to the off centre chuck to do all the insides. Pat uses a 6mm bowl gouge to turn the centre hole. He cuts half the hole and sands and finishes the first side before turning the pendant over and finishing off the hole. Again the centre diameter line is used to align the pendant in the chuck after it has been turned over and before the chuck is tightened. You have to be careful because the wood you are turning through to make the hole is of differing heights because the hole we are making is off centre. At the start of the hole, sometimes you are turning wood and sometimes air. It's important to try and stay on the bevel.

The original centre hole is incorporated into the large off centre hole we are now creating. The important thing here is to try and blend the curves of the original centre turning and the new off centre hole. Pat typically sands through the grits from 120 to 400. He uses U-beaut EEE as a cutting compound and U-beaut Glow as a friction polish. He uses toilet paper to apply these and keeps the EEE and its paper to one side of the lathe and the Glow and its paper to the other side so that they don't get mixed up. You don't want to be mixing cutting compound in with your final polish.

Pat applies the EEE and the Glow with the lathe stationary and works it in from the outside of the pendant towards the centre. This is to avoid getting cutting compound or wax under the lip of the off centre chuck. He typically gives them two to three coats of finish. Pat sometimes decorates the pendants by putting a ring or two around them. He uses a 3 point tool to do this.



**Competition
Table
March**



President's Page

Back in October I wrote about our Club's project to provide wig stands for cancer patients undergoing chemotherapy. We also chose to make wig stands the theme for the Jim Dunford trophy competition last year. As has been reported previously we had a very positive response from club members, and many items were contributed for distribution through the Cancer Society. I understand that most of this "stock" has now been distributed and that there is room for more donations to be received. Remember that club wood is available through Noel if you would like to convert some for this worthy cause.

I've made and given away a number of stands now, and whenever I do I find myself hoping that they will find their way to someone who genuinely appreciates the gift. As I encourage others to do I've always signed my work – as much to make a personal connection with the piece and recipient as anything, and not really expecting any feedback. However, I recently received some which I would like to share with you. I found it very moving and I think it really illustrates how our craft can yield something with so much more meaning than the conversion of a lump of "waste" wood into a functional object.

The lady who received one of my pieces wrote:

"I wanted to express my very warm and sincere thanks for the beautiful wig stand. I was the surprise recipient of a lovely turned and painted stand you made in December 13. It was given to me in February 14 when I picked up my wig to cover my now bald head. I had no idea that there were people like you doing these sort of generous and unsung gestures. For me as a cancer patient the treatment is quite hard – more than I thought it would be. Having the wig stand gifted to me by a complete stranger was overwhelmingly special and brought me to tears. I just wanted to say thank you and let you know just how very special and appreciated your work is.

From a very grateful stranger to a very special person. "

If ever I needed further inspiration to continue, there it is – and I hope you will join me.

Happy turning everyone.

Peter

Hands On at Cobham

The last two “Hands On at Cobham” nights we have had some pre-organised techniques to have a look at in addition to the usual general problem solving sessions. In the February gathering we had a play with sandblasting and in the March session we had a look at “Inside Out” turning techniques.

This concept of looking at some specific techniques seems to be working well so in the April session we are going to have a look at some thread cutting and spiraling tools and in the May meeting we will experiment with turning mushrooms and toadstools.

Sand blasting

The effect of the sand blasting was very dependent on the wood type. Oak was hardly affected, Walnut went furry and some Oregon that Peter brought in sand blasted beautifully. Peter had turned a thin Oregon bowl. He masked the top and bottom with a paper masking tape and was able to sand the soft summer wood completely away and was left with the tougher winter wood .



Masking



Sanding Blasting



Softer wood blasted away

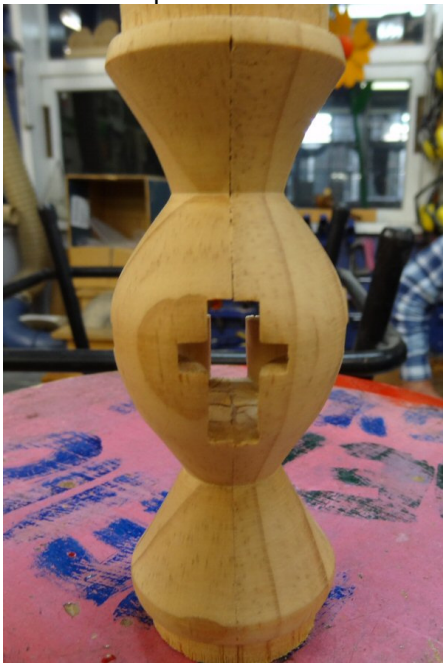


Bowl ready for finishing

Sandblasting requires a constant supply of high-pressure air and so a large compressor is required. The gun we used required delivery of 100 PSI at 5 cubic foot per minute. The sandblasting cabinet we used is available from Topmaq and costs around \$230. This includes the gun and hose but does not include the glass beads, silica sand or alum oxide that is used for blasting.

Inside Out Turning

At the March gathering we had a look at the concept of “Inside Out” turning. Pat brought some examples of partially finished projects that demonstrated the principles and Joe demonstrated a jig he is working on for doing inside out turning without glue. The usual technique involves glueing a number of sections of wood together (usually four) then turning a pattern or shape into the outside of the wood, breaking the glue joints, regluing the wood so that the turned pattern is now on the inside and turning the new outside to create holes into the inside pattern. Joe’s jig provides a jam chuck at both the chuck end and live centre end of the lathe. The wood is held tightly using a friction fit. The pressure of the tailstock holds the pieces of wood in line with each other. Because it was the first time this jig was used we also used cable ties on the wood just in case it all flew apart.



Noel's Spoon

At the March meeting Noel turned a scoop shaped spoon as part of the "Kitchen Utensils" theme.

Noel first measured up the sphere end of the spoon and then shaped the sphere and handle sections. He finished the scoop end with a pipe tool to make sure it was a perfect sphere.

He then made up a jam chuck from a piece of waste wood and turned a hollow in it the same size and shape as half of the sphere. He then licked the sphere to swell the wood and quickly fitted it into the jam chuck.

Next he carefully hollowed out the scoop with a small bowl gouge being careful to apply force towards the chuck and exert as little sideways pressure as possible.

The chuck held well and Noel was able to hollow out the scoop and finish the spoon. Actually the chuck held so well that he damaged the spoon removing it from the chuck.

Noel suggested that an alternative method would be to use a ring chuck. This is a metal ring with a compression slot cut in it. It is designed to fit in 50mm jaws and hold a sphere so that it can be turned. This can mark softer woods and so might require more sanding than the jam chuck.



Noel measuring the required sphere size



Using the Pipe Tool to make a sphere



The spoon and chuck together



Ring Chuck

Sphere held in
Ring Chuck



April / May 2014

More Wig Stands Required

The Christchurch Woodturners Association supplies wig stands for people requiring wigs for medical reasons. We supply these free of charge to the Canterbury community. If you have some spare time and would like to contribute to this worthwhile cause there are plans for wig stands on the South Auckland Woodturners site at www.sawg.org.nz, click the Projects tab, S to Z, Wig Stand. If you require wood for your wig stand you should contact Noel at 349-8976. He has kits available with all the wood you will need.

Please be sure to name your stand clearly. Recipients of the stands often like to send us a thank-you note or to contact you directly and so having a clear name under the stand is most important.



Competition to find the Funniest Woodturner in Christchurch

That's the most humorous Woodturner, not the most peculiar. You will be given a question and the funniest answer wins a \$30 Bunnings gift voucher. Answers can be emailed to the Editor (joe.hayes@trutrack.com) or posted to our PO Box 29-372 Fendalton addressed to "Funniest Woodturner Competition". Answers should be 400 words or less and be entered by Friday 25th April. The winner will be announced at the regular meeting on Thursday 1st May. A humor sub-committee will be formed from any members of the committee who don't enter the competition. They will decide the winner. ***The question is:***

How much wood would a woodchuck chuck if a woodchuck could chuck wood?

And we all know that a woodchuck can chuck wood (don't we) so we should be able to come up with a much better answer than the general population. Any answers referring to Chuck Norris, vomiting ground hogs or Sioux Indians will be considered in bad taste but as long as they are really funny they will be totally acceptable.



Pat's Steak Tenderiser

At the March meeting Pat had a look at turning a Steak Tenderiser as part of the "Kitchen Utensils" theme.

The handle and head are quit straight - forward. The interesting bit is how he was going to do the pyramids on the tenderiser end of the head.

I had assumed that it would be done on a router table with a V bit while the wood was still square then turned round but Pat had a much simpler idea.

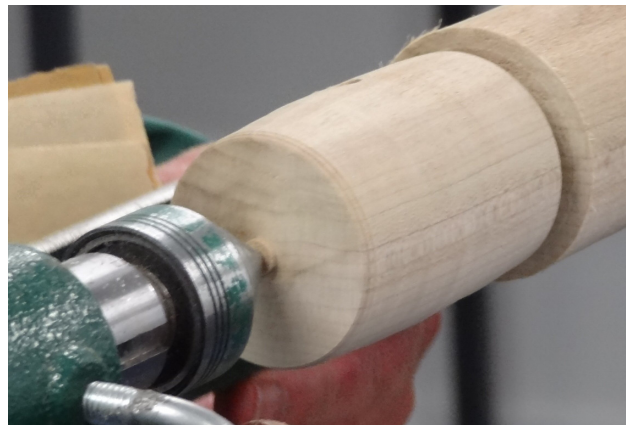
We don't have a bandsaw at demonstration nights so Pat just talked about how he would do this.

Turn the head round. Make a bandsaw sledge for it, mark up where all the deep groves are going to be. Bandsaw cut all the groves to the required depth, then mark the high points or ridges between the low points or valleys already cut. Now move the sledge to 45 degrees and cut from the top of the ridges to the bottom of the valleys in one direction then rotate to sledge to 45 degrees in the opposite direction and cut from the other side of the ridges down to the valleys. Remove the "V's" of wood then rotate the head 90 degrees in the sledge and do it all again in the other direction.

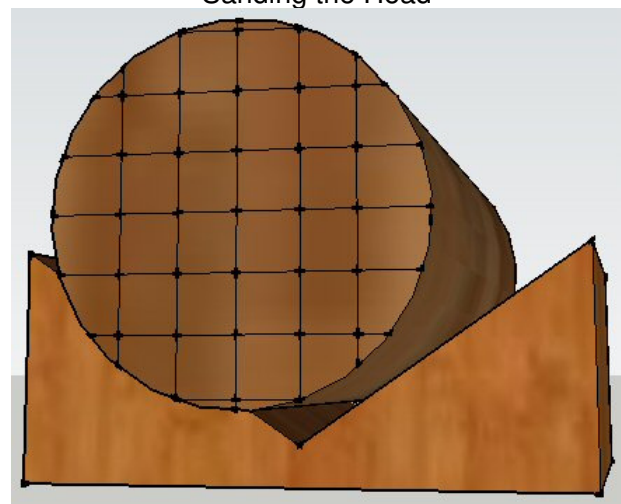
As most of us have bandsaws this is a very elegant solution. And it reinforces the idea that even if you know how all the turning tools work, it is picking up techniques from other turners that improves our craft.



Pat shaping the Handle

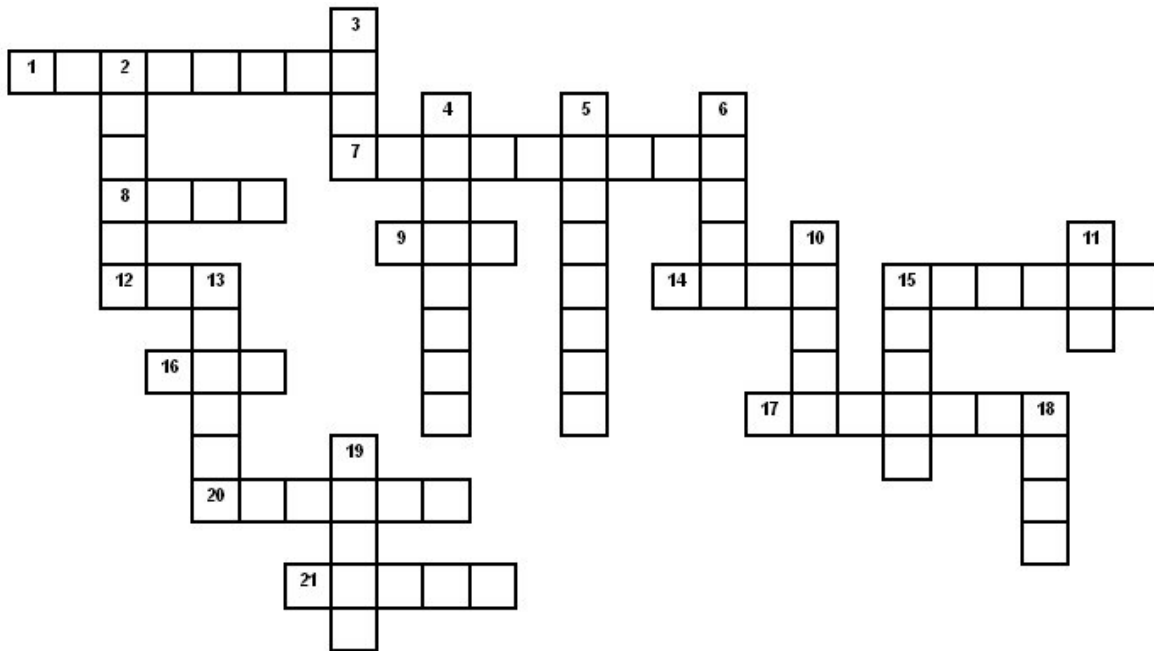


Sanding the Head



Head marked up and on Bandsaw sledge

“Timber we turn” ~ Crossword



Across

- 1 You can't get much more sick than this (8)
- 7 White pine (9)
- 8 Red pine (4)
- 9 Cigarette tip (3)
- 12 Poisonous sheep (3)
- 14 Not your row (4)
- 15 Yellow (6)
- 16 Nightmare Street (3)
- 17 Mourning, Death and the Underworld (7)
- 20 Primary wood used to make Waka and Māori carvings (6)
- 21 A flat, ordinary aircraft (5)

Down

- 2 "I can't lie Pa, I did cut it with my hatchet" George Washington (6)
- 3 A thousand cuppas all jumbled up (4)
- 4 *Castan-wyddan* in Welsh, *Kastanjiet* in Dutch, *Châtaigne* in French, *Castanea* in Latin (8)
- 5 Golden chain (8)
- 6 Black Pine (5)
- 10 Deck the halls (5)
- 11 From little acorns (3)
- 13 Humpty Dumpty was a nutter sitting on a wall (6)
- 15 Tane Mahuta (5)
- 18 Smooth as (4)
- 19 Syrup (5)

For Sale

Grinder 125mm double ended
2 spare grind stones and dressing stick
and drill sharpening attachment \$35

Stainless Steel Rules 2ft (600mm) \$5

Contact Les Brindley on 338-2216

The following items are advertised on behalf
of a friend who is leaving Christchurch:

Topmaq bench-top drill
press and vice. The drill is
375W (1/2hp), 16-speed,
with a 16mm chuck and
has been used only once.
\$250



Triton workcentre (latest model) with wheel
kit, Triton TSA001 235mm circular saw, dust
hood, and dust collection bin. Has seen
frequent use, but in good condition. \$400



TL1000 lathe in good working order. The original
Teknatool lathe with 8 speed drive and a good
long bed.

It has an outboard tool rest to permit turning of
large bowls. Comes with a chuck.
Jacobs chuck. MT1 with a MT1/MT2 adaptor.

Range of turning tools.

Please contact Pat Jordan on 942-4279

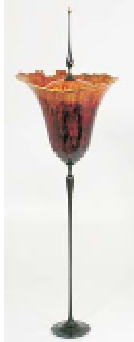


Triton RTA300 router table with Triton 1/2" router,
dust collection hose, and set of 1/2" router bits.
Used only about 5 times. \$400

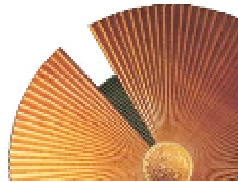


If you are interested in any of these items,
please contact Peter Clemett who can refer you
to the vendor.

April / May 2014



Cindy Drozda
Colorado, USA
www.cindydrozda.com



Vaughn Richmond
Perth, WA



Joey Richardson, Lincolnshire, UK
www.joeyrichardson.com

WOODTURNING NEW ZEALAND INTERNATIONAL SYMPOSIUM

2 to 5 October 2014 at
Wesley College, Paerata

More on www.sawg.org.nz



Theo Haralampou
Brisbane, QLD
www.woodturner.com.au



Phil Irons
Warwickshire, UK
www.philirons.com



Mike Gibson, Georgia, USA
www.michaelandcynthiagibson.com



Shane Hewitt, Whangarei
www.kauriart.com



Bruce Wood, Auckland



Robbie Graham, Taupo
www.wildwoodgallery.co.nz



Neville and Emma Walker
Kerikeri
www.kaurigifts.co.nz



Cynthia Gibson, Georgia, USA
www.michaelandcynthiagibson.com



Richard Raffan, Canberra, ACT
www.richardraffan.com



David Nittmann
Colorado, USA
www.davidnittmann.com



Ken Wraight, Melbourne, VIC

There will be trade stalls selling all the woodturning tools you need, an instant gallery, competitions, raffles, evening entertainment, and endless tea and coffee.

For further information go to South Auckland Woodturners Guild website www.sawg.org.nz
or contact Dick Veitch, 09 298 5775 or dveitch@kiwilink.net.nz

Product Review

1 ½” Wood Threading Kit from Carba-tec \$116.50

Every time I turn a box I think to myself, “It would be nice if I could screw the lid on”. When I saw the Wood Threading Kit in a Carba-Tec catalogue I just had to give it a try. The largest thread diameter is 1 ½ Inch 38mm which is a bit small for the boxes I make, I’d prefer 2 inch 50mm but that’s not available. The kit comes with a Tap, a Die and a comprehensive instruction sheet. The “tap” is for putting the internal thread in a hole, the die is for putting the external thread on a spindle.

I figured the tap would be easier than the die, drilled a 35mm hole in a piece of pine with a forstner bit, oiled the hole with rice bran oil, put the wood in a vice, made sure the tap was vertical to the wood and turned. Perfect thread first time – no learning curve. There was a bit of break out on the lead in to the thread but this sanded up with no problems. So far so good. Now for the die.



First thing I noticed is that there is an alignment block that the spindle needs to sit in before it gets to the thread cutter. This would be a problem if I was using it on a box lid but it looks like it is removable. I haven’t got any 38mm dowel in the workshop so I turned down some ash I had that was looking for a project. I chamfered the end slightly, oiled the ash, put it in the vice, fitted the thread cutter and started turning. The whole process went very smoothly and again a perfect thread first time!

Now the test is to see if the two threads are going to talk to each other, and to my delight – they do. It’s a bit tight for a start but as I thread the spindle in and out a few times and add a bit more oil the thread loosens up to a very smooth movement.

So the hard bit is paying \$116.50 for a threading tool that can only be used for one diameter – the easy bit is using it.

Right – next project is to make a large wooden nut and bolt and then let’s see if we can use it on a box. Otherwise I’ll have to learn how to use a thread chaser.

Wood Threading Kits are available in 5 different diameters: ½ Inch, ¾ Inch, 1 Inch, 1¼ Inch and 1½ Inch. There will be some to play with at the next “Hands On at Cobham” on Thursday April 17th.

Woodturning YouTube Links of Interest

Understanding Woodturning Catches

(Great introduction to tool angles for beginners)

<https://www.youtube.com/watch?v=iOvF5f1phhY>

Making a shade

(Our Soren turning a big Lampshade)

<https://www.youtube.com/watch?v=LgsDWb0orSQ>

Sharpening a Swept Back Grind or Irish Grind on a Bowl Gouge

<http://www.youtube.com/watch?v=rNCZP3veFqk>

How to make a bandsaw box

(No woodturning involved. Bizarre Demonstrator. Nice project)

<https://www.youtube.com/watch?v=JtJ3OOpp4Dw>

Spiralling and texturing tool part 2

(A look at the Sorby Spiraling tool. Crown has an equivalent tool that you can play with at the next "Hands On at Cobham" April 17th)

http://www.youtube.com/watch?v=gGDtL1LyM_A

Making an Oval wooden handle with Robert Sorby Stebcentres

(Using Stebcentres for off center spindle turning)

<http://www.youtube.com/watch?v=6Gdhaj8R6IA>

Woodturning Eccentric or off center tealight

(Interesting use of off center piercing)

<https://www.youtube.com/watch?v=eTE3NurPBD4>

Vasebuilding Dance by Paoli www.paoliswork.com

(Turning a very large segmented vase, (with music))

<https://www.youtube.com/watch?v=ydDQQQww1AA>

Wood Turning - An Apple from Irish Yew

(Turning an inclusion in the wood into an feature)

<http://www.youtube.com/watch?v=xA9cB0PzY7>

Bandsaw Magic

(See if you can work out what he is making before he finishes)

<https://www.youtube.com/watch?v=YXW55S4X9zo>

Making Chess Pieces on a Spring Pole Lathe

(History of woodturning. This is a development of the bow lathe we look at last newsletter)

<http://www.youtube.com/watch?v=J0tzz62aKiY>

<p style="text-align: center;">For Sale</p> <p>Asmac 15 inch thickneser, top motor model with dust hood</p> <p>1h.p Asmac dust extractor.</p> <p>For one of our members. Ring Rex Marshall. 3529297.</p>	<p style="text-align: center;">Wig Stands</p> <p>Wig Stands Wig Stands Wig Stands ~ Don't forget ~we need more Wig stands</p> <p>Q... What kind of timber do movie stars turn?</p> <p>A...Hollywood</p>	<p>A Termite walked into a pub and asked, "Where's the bar tender?"</p>
<p style="text-align: center;">Woodturning at the Mens Shed</p> <p>If you are looking for something to do on a Tuesday afternoon don't forget to visit Rex at the Aldred Men's Shed at the corner of Nancy Ave and Knowles Street. Bring a gold coin for entry and wood for a project if you have one in mind. The fun starts at 1pm.</p>		

2013/14 Committee Contact Details

Patron: Soren Berger, 25 Rodney St, New Brighton; 388 1004.
President: Peter Clemett: 36a Fenhall St, Russley; 342 5242.
Vice President: Rick Bolch: 28 Waiau St, Hoon Hay; 980 5156.
Treasurer: Bill Parsons, 76 Fendalton Rd, Fendalton; 351 5647.
Secretary: Bruce Irvine, 401 Withells Rd, Avonhead; 358 8482.
Newsletter: Joe Hayes, 130 Petrie St, Richmond; 385 3910.
 Noel Graham: 63 Oakley Cres, Hornby; 349 8976.
 Celia Irvine: 401 Withells Rd, Avonhead; 358 8482.
 Pat Jordan, 39 McBeath Ave, Hoon Hay; 942 4279.
 Rex Marshall: 396 Greers Rd, Bishopdale; 352 9297.
 Ray Morgan: 154b Brookside Rd, Rolleston; 366 9795.
 John Scott: 26 Carston St, Leeston; 324 8340.
 Mike Wing: 7 Donovan Pl, Halswell; 741 1475.